



Be inspired<sup>SM</sup>

# Pork Merchandiser's Profit Maximizer

- Foodservice Edition

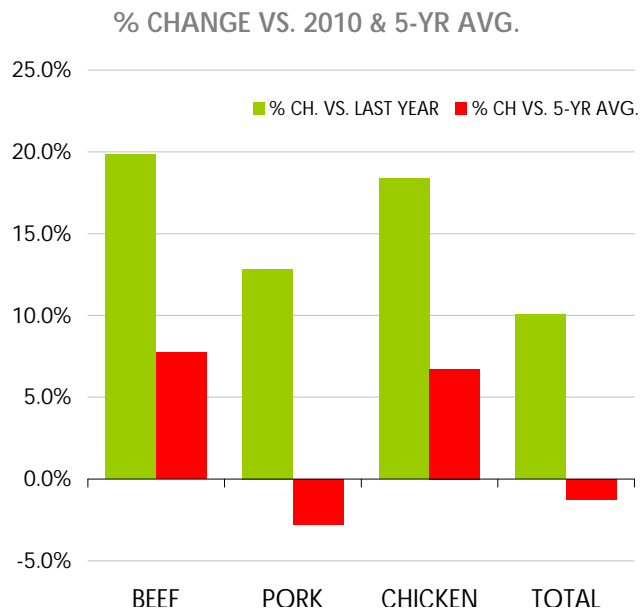
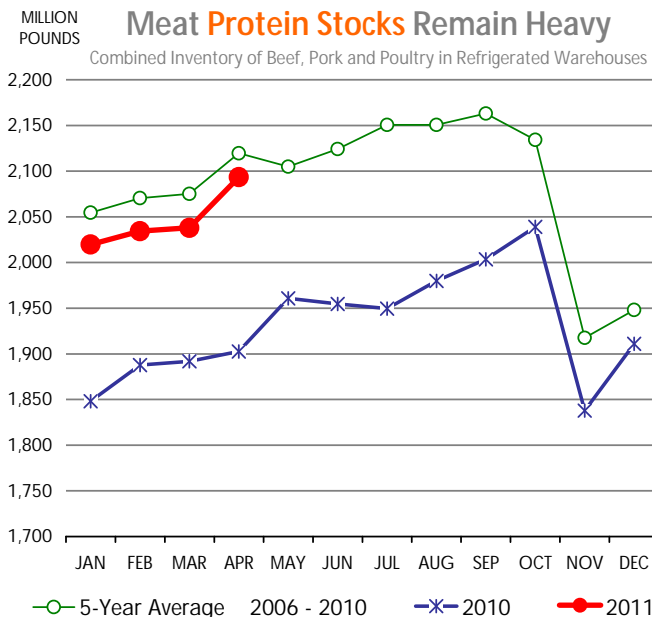
© 2011 The National Pork Board, Des Moines, IA 515-223-2600;  
Prepared by Steiner and Company, Manchester, NH 800-526-4612.

May 23, 2011

## NEWS THIS WEEK!

The latest cold storage report showed that by April 30, total stocks of beef, pork, chicken and turkey were 2.094 billion pounds, 10% higher than a year ago but still some 1.2% lower than the five year average. The increase in cold storage inventories is particularly significant given that

Easter this year was much later than in previous years. While ham inventories were predictably lower due to Easter, inventories of beef, chicken and a number of pork items continued to increase. The increase in cold storage inventories reflects in part slower demand this spring. This is particularly true for broilers and broiler parts. Total broilers inventories as of April 30 were 744.3



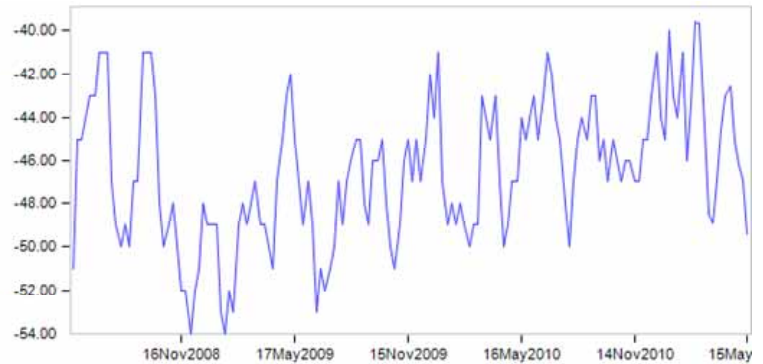
Steiner and Company produces the National PORK Board newsletter based on information we believe is accurate and reliable. However, neither NPB nor Steiner and Company warrants or guarantees the accuracy of or accepts any liability for the data, opinions or recommendations expressed.

million pounds, 115.4 million pounds or 18.4% higher than a year ago. Stocks of chicken breasts at the end of April were 145.2 million pounds, 32.4% higher than a year ago and accounting for about a third of the overall increase in chicken stocks. Wing inventories also remain burdensome as evidenced by very weak wing prices in the marketplace. Total wing inventories at the end of April were 69.9 million pounds, 109% higher than a year ago and also accounting for a third of the overall increase in chicken stocks. Part of the reason demand for chicken has failed to materialize this spring may have to do with the cool spring in much of the US East Coast, which has limited outdoor barbecues. The surge in gasoline prices has negatively impacted business at a number of foodservice chains. The surge in oil prices has pinched consumer disposable incomes while a deteriorating housing market remains a drag on overall spending. The attached chart shows that consumer comfort index (a measure of how consumers perceive their financial situation as well as the state of the economy) is now down to the lowest point since last July. Coming into the spring, a number of market participants jumped on the chicken bandwagon, attracted by the relatively lower prices vs. beef and pork products. Large operators worked on offering new products based on chicken breasts and contracted with suppliers based on rather rosy sales forecasts. Those forecasts were likely driven by the expectation for strong economic growth and employment gains. As business has been slow to develop, however, the spot market continues to be heavy with product and some of it is backing up in freezers. It also does not help that the industry continues to bring to market increasingly larger birds, which are bred primarily for the foodservice industry.

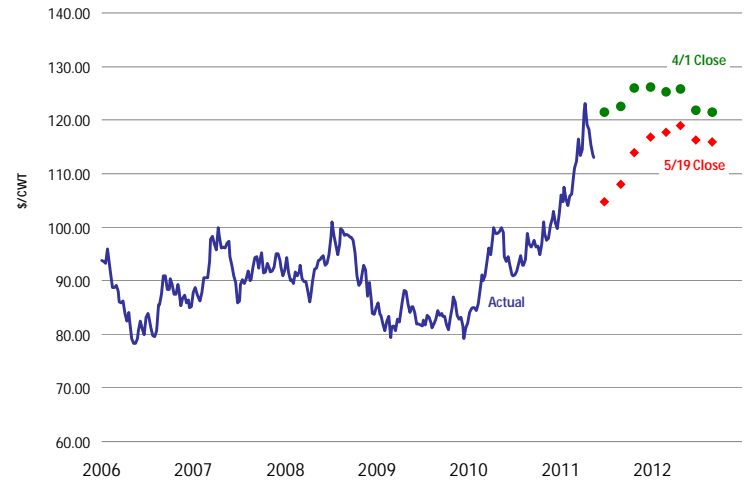
Broilers are not the only items that are feeling the negative impact of higher fuel costs and deteriorating consumer outlook. Cattle and hog prices also have slumped as US domestic demand this spring has been softer than expected. The charts to the right show the change in out front futures prices for hogs and cattle. Much of the shift in prices has been in the nearby market as

US Consumer Comfort Index: Bloomberg

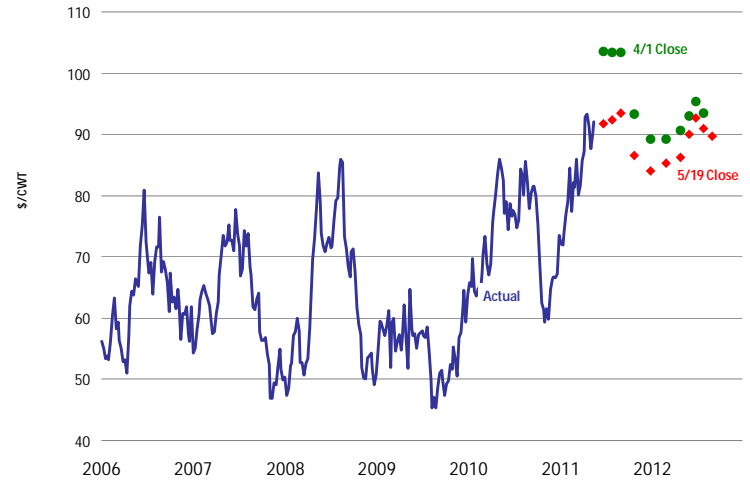
Based on Weekly ABC News/ Washington Post Poll



US LIVE STEER: ACTUAL + FUTURES ON 4/1 AND 5/19



IA/MN LEAN HOGS: ACTUAL + FUTURES ON 4/1 AND 5/19



realities of cash prices catch up with futures valuations. Out front, however, the change has been much smaller and overall the expectation is for prices to be at historically high levels. Stocks of pork at the end of April were lower than in March, largely due to the depletion of ham

inventories into Easter. Even with the lower ham stocks, total pork inventories, however, were still some 12.8% higher than a year ago. Total ham inventories were 76.7 million pounds, about 30 million pounds lower than a year ago and now at about the same level as a year ago. Current ham inventories are not burdensome and this should be supportive of prices going into August and September. Inventories of picnics at 9.491 million pounds were 14.3% higher than a year ago while belly stocks at 53.2 million pounds were 7% higher than a year ago. Total pork belly inventories are currently 24.8% lower than the five year average for this time of year. High belly prices likely caused some end users to shift their plans on belly use and, as a result, prices have declined notably compared to early April levels. Current stocks are far from burdensome and once the summer bacon demand kicks in, we expect belly prices to move higher and peak sometime in early to mid-August.

If there was any bullish indicator in the latest cold storage report it was for turkeys. Industry worked hard in 2009 and 2010 to cut supplies and the strategy appears to have worked. Turkey prices are sharply higher and stocks are running well behind year ago levels. Total turkey freezer inventories on April 30 were 364.4 million pounds, 13.7% lower than a year ago and 19.7% lower than the five year average. Normally turkey freezer inventories build into the fall but high prices and tight supplies will limit the accumulation of turkeys in the freezer, likely setting the state for even higher turkey and turkey breast prices in October and November.

### Upcoming holidays:

**2011** Victoria Day [Canada] (Monday May 23); Memorial Day (Monday May 30); Father's Day [US and Canada] (Sunday June 19); Canada Day [Canada] (Friday July 1); Independence Day (Monday July 4); Labor Day [US and Canada] (Monday September 5); Rosh Hashanah (Thursday September 29); Yom Kippur (Saturday October 8); Columbus Day (Monday October 10);

Canadian Thanksgiving Day (Monday October 10); Daylight Savings Time Ends [US and Canada] (Sunday November 6); Veterans Day (Friday November 11); Remembrance Day [Canada] (Friday November 11); Thanksgiving (Thursday November 24); Hanukkah (Wednesday December 21); Christmas Day (Sunday December 25); Boxing Day [Canada] (Monday December 26).

## PORK

**NOTE: WE ARE NOW REPORTING AND FORECASTING WEIGHTED AVERAGE BLUE SHEET PRICES FOR PORK CUTS.**

**Live hog.** For the week ending May 21 hog slaughter was 2.012 million head, up about 0.50% from the same week a year ago. Slaughter for the last two reported weeks was up 0.76% vs. a year ago.

**Iowa/Minnesota, Base Lean Market Hog 185 lbs. Carcass Values.** Lean hog carcass values at \$64.05/cwt. on Friday were up about \$3.91/cwt since Wed. May 11. Prices are now about \$11.58/cwt. over year ago values.

**21/dn Pork Loins "Total on FOB Basis"** (page 8). Prices finished last week at \$1.4800 for the "Total on FOB Basis" quote, up about 7 cents since the Wed. May 11 quote and about 14 cents higher than year ago levels.

**Bnls. Strap on Pork Loins.** Prices finished the week at \$1.7300 for the strap on loins, up about 5 cents since Wed. May 11 but down about 2 cents from the year ago levels. Strap off loins at \$1.8800 are up about 4 cents since Wed. May 11 but down about 24 cents compared to the year ago quote.

**Boneless sirloins** at \$1.3129 are down about one cent from the Wed. May 11 quote and down about one cent from the year ago price.

**Pork tenderloin** finished last week at \$2.9500 up about 5 cents since the Wed. May 11 quote and up about 33 cents from the year ago price.

**5/10 Pork Butts** “Total on FOB Basis” (page 10), prices finished the week at \$1.2067 up about 3 cents since Wed. May 11 and up about 14 cents from the year ago levels. US consumer demand for pork butts should improve as the weather does which will put some upward pressure on the pork butt market.

**4.25/dn Spare Ribs** “Total on FOB Basis” (page 8). Prices finished the week at \$1.7300 up about 9 cents since Wed. May 11 and up about 19 cents from year ago levels.

Rib inventories on April 30 were 97.0 million pounds, up 20 percent from a year ago.

Peak price for the year normally occur prior to Memorial Day. Expect lower prices in June.

### **Hams** “Total on FOB Basis”.

The Total on FOB Basis for 17/20 hams (page 9) price was 80.00 cents unchanged since Wed. May 11 but about 5 cents higher than a year ago.

20/23 hams finished the week at 80.00 cents for the Total on FOB Basis down about 2 cents since Wed. May 11 but up about 4 cents from the year ago level.

23/27 hams finished the week at 80.00 cents for the Total on FOB Basis down about 2 cents from the Wed. May 11 quote but up about 3 cents from the year ago level.

Total ham cold storage stocks on April 30 at 76.7 million pounds were almost unchanged from year ago levels.

**Bellies** “Total on FOB Basis”. 14/16 bellies (page 9) finished Friday at 125.00 cents, unchanged since the Wed. May 11 quote but up about 5 cents from the year ago quote.

Cold storage stocks on April 30 were 53.2 million pounds, up about 7 percent from year ago levels.

**42 CL Pork Trim** “FOB Basis”. Prices finished the week at 55.60 cents down about 7 cents since Wed. May 11 but up about 6 cents from the year ago price.

**72 CL Pork Trim** “FOB Basis”. Prices finished the week at \$0.9000 up about 5 cents since the Wed. May 11 quote and up about 12 cents from the year ago level.

Freezer stocks of all trimmings on April 30 were 54.4 million pounds, up 21% from the year go levels.

**72 CL Picnic Meat** “FOB Basis” (page 10). Picnics prices at \$0.9800 are unchanged from Wed. May 11 but about 8 cents over the year ago price.

---

## **POULTRY**

**Georgia Dock Broilers.** The Georgia dock price on Wednesday May 18 at 86.50 cents was down less than one cent from a year ago.

The composite market average price was down about 7 cents from the year ago levels at 82.34 on Monday May 16.

Broiler slaughter for the week ending May 21 was estimated at 163.80 million, down about 0.03% from a year ago. For the last two weeks slaughter was up 1.21% vs. a year ago.

**Breasts.** Prices on boneless skinless breasts finished the week at \$1.2942 down about one cent since the Wed. May 11 quote and down about 16 cents from the year ago levels.

**Leg Quarters.** The value of this item and the timing of price moves are completely dependent on the timing of export purchases and export business, which seems good at this time. Leg quarter prices are now trading about 12 cents over year ago prices at 50.62.

**Wings.** Prices at \$0.79.01 are down about 43 cents from year ago levels. The cure for low prices is low prices. We think wing prices should find an annual bottom very near current levels.

---

## Turkeys

**Hens** finished last week at \$1.0200 up about one cent since Wed. May 11 and about 17 cents over the year ago price.

**Toms** finished last week at \$1.0200 up about one cent since Wed. May 11 and about 17 cents over the year ago price.

Total turkey supplies in the freezer on April 30 were down 13 percent from a year ago at 364.4 million pounds. Whole birds were down 14% from year ago with that inventory at 180.7 million pounds.

Turkey slaughter was 4.489 million head for the week ending May 14. For the last two reported weeks slaughter was 3.59% above a year ago.

**Boneless Turkey Breast Meat.** Boneless skinless turkey breast meat prices finished last week at \$2.50, unchanged since Wed. May 11. Prices are up about 42 cents vs. year ago prices.

## BEEF

**NOTE: WE ARE NOW REPORTING AND FORECASTING WEIGHTED AVERAGE BLUE SHEET PRICES FOR BEEF CUTS.**

**Choice 112A Heavy Bnls. Lip On Rib Eyes** at \$5.1835 (weighted average quote) finished last week down about 40 cents since the Wed. May 11 quote and down about 11 cents vs. the year ago price. **Select 112A Heavy Lip On Rib Eyes** prices finished last week at \$5.0564 (weighted average quote) down about 18 cents since Wed. May 11 and down about 10 cents from the year ago price. The current spread between Choice and Select heavy ribs shows the Choice Rib Eyes are trading at a premium to the Select by \$0.0958 per pound. The 2010 annual average spread (wt. average price) was the Choice at a premium to the Select by \$0.5461 per pound and the previous five years (2006 thru 2010) average spread was

Choice at a premium to the Select by \$0.5833 cents per pound.

**Choice regular #168 insides** finished last week quoted at \$2.0024 up about 8 cents since Wed. May 11 and up about 6 cents from the year ago price. **Choice ¼ inch trimmed #168 insides** finished last week quoted at \$2.0812 up about 8 cents since Wed. May 11 and up about 10 cents from year ago levels.

**Choice #170 Gooseneck Rounds** finished last week at \$1.8531 down about 3 cents since Wed. May 11 but up about 18 cents from the year ago levels.

**Choice #180 (0x1) Bnls. Strip Loins** finished last week quoted at \$4.8856 (wt. avg.) down about 19 cents from the Wed. May 11 quote. Prices are about 61 cents below year ago levels.

**Choice #184 Regular Heavy top butts** finished at \$2.1849 (wt. avg.) down about 18 cents since Wed. May 11 and down about 52 cents from year ago levels. **Choice #184 ¼ inch trimmed Top Butts** finished at \$2.2492 (wt. avg.) down about 19 cents since Wed. May 11 and down about 54 cents from the year ago levels.

**Choice #185A Flap Meat** prices finished Friday at \$3.7369 (wt. avg.) up about 25 cents since Wed. May 11 and up about 59 cents from year ago values.

**COARSE GROUND BEEF - 73CL Coarse Ground** product finished last week at \$1.6792 down about 6 cents since Wed. May 11 but up about 10 cents from year ago levels. Current prices are \$0.0475 per pound over the price of a 73CL meat block formulated from 90CL and 50CL trim. A year ago the margin was \$0.2165 per pound and the five years average for May is \$0.0452 per pound over. **81CL Coarse Ground** product finished last week at \$1.9253 up about 7 cents since Wed. May 11 and up about 28 cents from the year ago quote. Currently 81CL Coarse Ground is trading for \$0.1310 per pound over a meat block made up of 90CL and 50CL trim. A year ago the spread was \$0.1344 and the five year average spread for May is a positive margin of \$0.0488.

**MANUFACTURING BEEF AND TRIM**

Domestic cow meat supplies are now below year ago. For the last four reported weeks the **total cow slaughter** rate (the last week being the week ending May 7) was 0.91% below a year ago.

Imported beef supplies from Australia are increasing after being down very sharply due to weather issues in Australia and better demand for Australian product from non-USA countries. New Zealand's heavy slaughter season basically over until October/November. Uruguay continues to find better markets for its beef and is shipping insignificant amounts to the USA.

The currency market continues to discourage shipments to the USA. The Australian dollar finished last week at US\$1.0667/Australian \$.

**90CL Bnls. Beef** prices finished the week at \$1.9773 (wt. avg.) down about 2 cents since Wed. May 11 but about 30 cents over the year ago price quote. We expect prices to be modestly lower in early June. Farmers liquidated their beef and dairy cows in 2010, but that liquidation appears to be slowing up. We expect significantly less cows slaughtered in 2011 vs. 2010. Fewer cows in the kill should mean higher prices than a year ago for the remainder of 2011.

**50 CL Beef Trim** prices finished last week at \$1.1671 on Friday up about 14 cents per lb. (wt. avg.) since Wed. May 11 and about 24 cents over the year ago level.

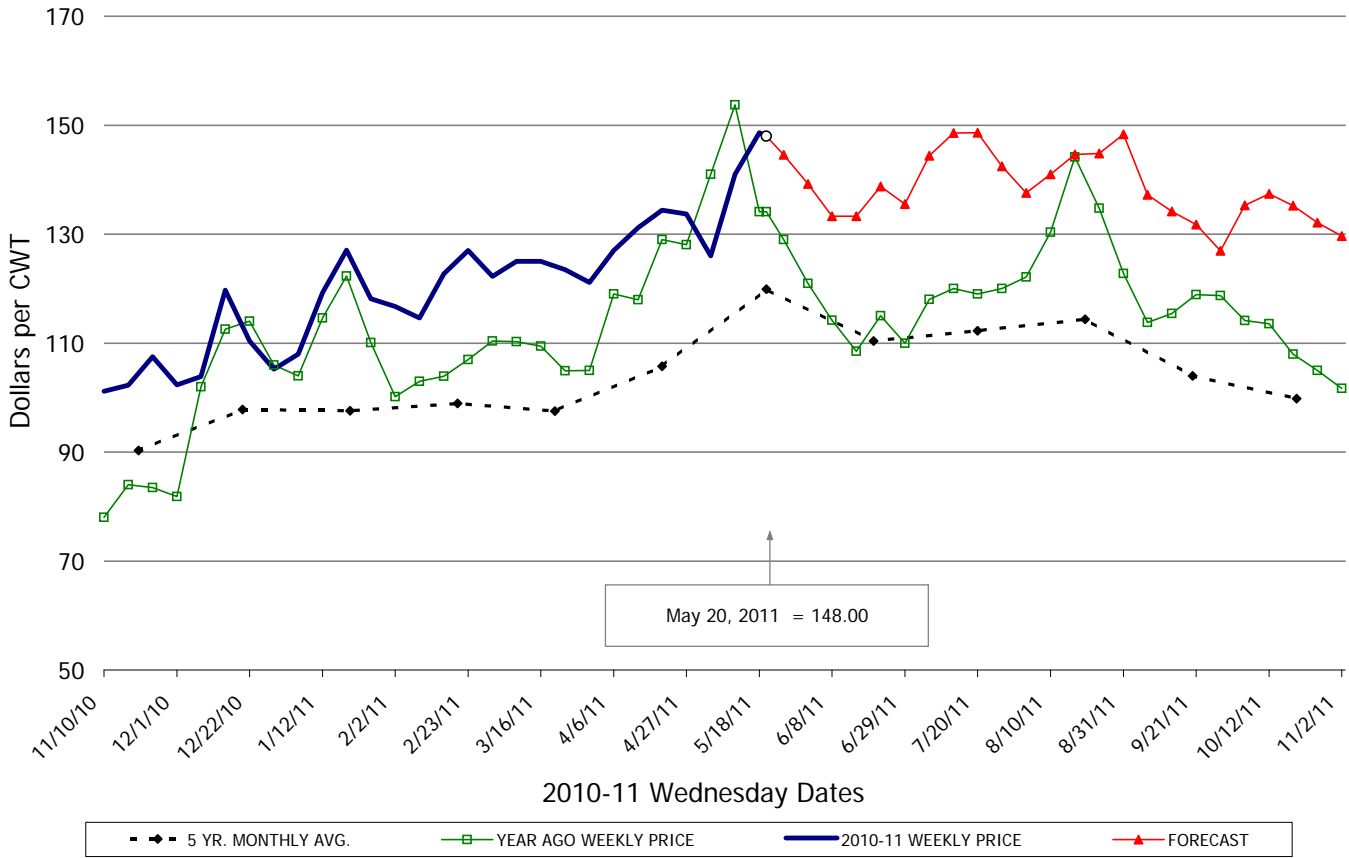
---

---

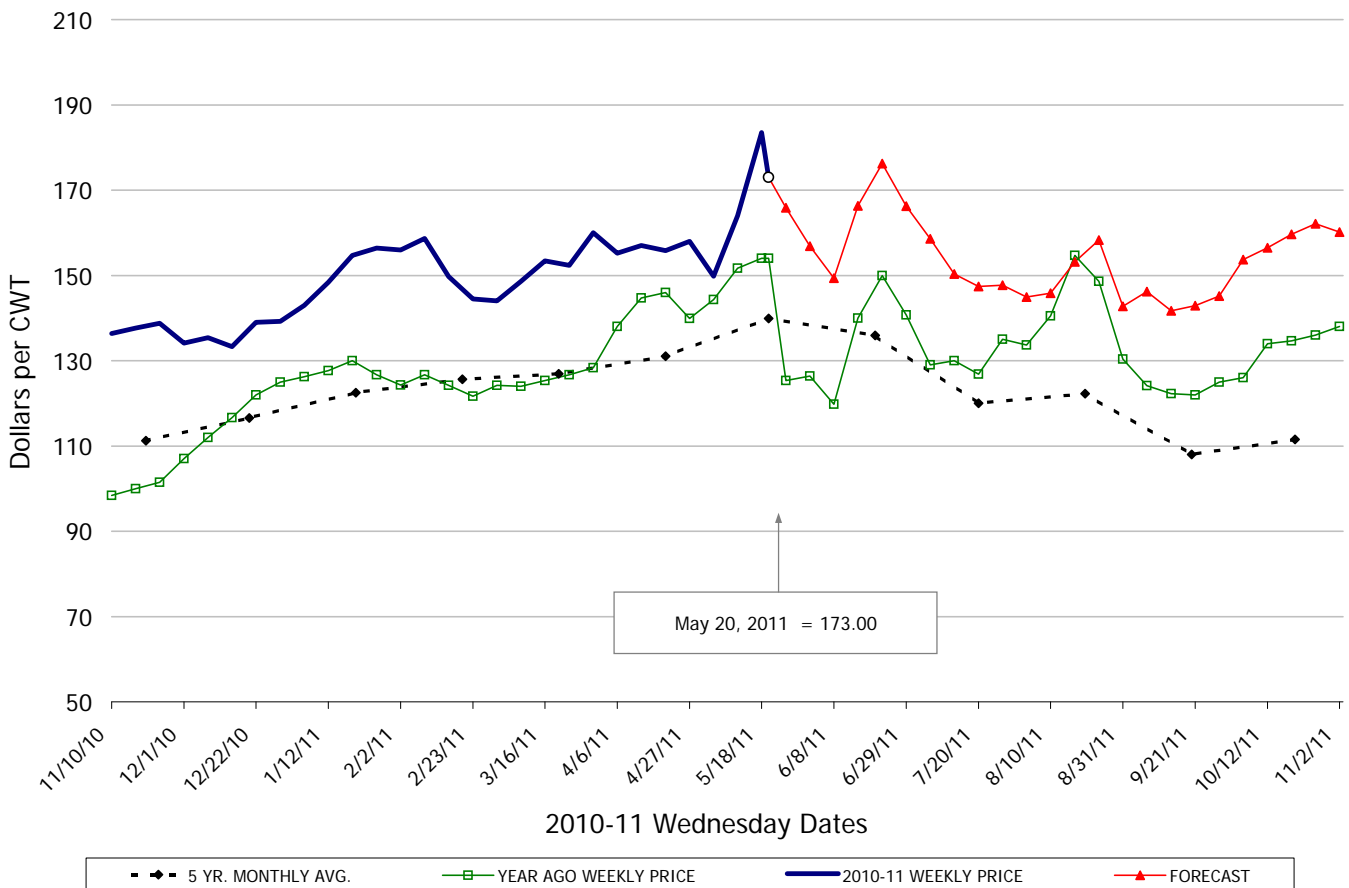
# Food Service Summary Table - WT. AVE

	2010 - 11 History								2011 FORECAST						
	Nov	Dec	Jan	Feb	Mar	Apr	5/11/2011	5/20/2011	6/1/2011	May	Jun	Jul	Aug	Sep	Oct
<b><u>PORK</u></b>															
TRIM LOIN, 1/4" Trim 21#DN-LGT, TTL on FOB Basis, USDA	1.03	1.08	1.18	1.20	1.23	1.32	1.41	1.48	1.39	1.42	1.36	1.46	1.42	1.34	1.35
TRIM LOIN, 1/8" TRM/less 21#DN-LGT, TTL on FOB Basis, USDA	1.15	1.21	1.31	1.30	1.34	1.44	1.55	1.60	1.54	1.56	1.51	1.57	1.58	1.47	1.53
LOINS, CNTRCUT, BNLS STRAP-OFF 5-11#, USDA	1.63	1.68	1.76	1.75	1.80	1.88	1.84	1.88	1.92	1.88	1.94	1.92	2.03	1.94	2.00
PORK TENDERLOIN 1.25/DN#,	2.26	2.15	2.26	2.56	2.58	2.70	2.90	2.95	2.90	2.91	2.92	3.00	2.78	2.75	2.76
TRIMMED BUTT, 1/4" TRM 5-10#, TTL on FOB Basis, USDA	0.98	0.99	1.06	1.26	1.17	1.19	1.17	1.21	1.25	1.28	1.33	1.27	1.28	1.20	1.23
SPARERIBS, 3 BAG/3 PCVAC 4.25#/DN-LG, TTL on FOB Basis, U	1.38	1.36	1.51	1.52	1.52	1.57	1.64	1.73	1.57	1.69	1.63	1.51	1.49	1.44	1.58
ST LOUIS STYLE RIBS 2 1/4 DN	2.38	2.36	2.51	2.52	2.52	2.57	2.64	2.73	2.57	2.69	2.63	2.51	2.49	2.44	2.58
SPARERIBS, 2 BAG/3 PCVAC 4.25#/UP-M, USDA	1.31	1.32	1.48	1.47	1.45	1.51	1.60	1.58	1.48	1.58	1.56	1.46	1.46	1.40	1.52
LOIN BACKRIB (BOXED), FRSH/FRZN, 1.75-2.00, USDA	2.34	2.34	2.34	2.34	2.34	2.34	2.34	2.34	2.63	2.34	2.62	2.68	2.72	2.71	2.83
LOIN BACKRIB (BOXED), FRSH/FRZN, 2.00/UP, USDA	2.41	2.04	2.04	2.04	2.04	2.04	2.04	2.04	2.04	2.04	2.04	2.04	2.04	2.04	2.04
SKINNED HAM, BONE-IN, 17-20#, TTL on FOB Basis, USDA	0.92	0.82	0.75	0.78	0.82	0.80	0.80	0.80	0.82	0.80	0.86	0.91	0.96	1.00	1.09
SKINNED HAM, BONE-IN, 20-23#, TTL on FOB Basis, USDA	0.85	0.77	0.71	0.78	0.82	0.77	0.82	0.80	0.80	0.80	0.85	0.90	0.96	0.96	1.03
SKINNED HAM, BONE-IN, 23-27#, TTL on FOB Basis, USDA	0.77	0.73	0.70	0.78	0.80	0.77	0.82	0.80	0.81	0.81	0.86	0.91	0.96	0.96	0.95
SELECT, BNLS 5 MUSCLE HAMS 94-96%, TTL on FOB Basis, USDA	1.32	1.40	1.26	1.19	1.31	1.20	1.20	1.20	1.46	1.20	1.43	1.53	1.60	1.61	1.60
BELLY, SKIN-ON, TRIM 12-14#, TTL on FOB Basis,	0.92	0.95	1.09	1.21	1.39	1.47	1.25	1.25	1.55	1.24	1.47	1.57	1.54	1.52	1.31
BELLY, SKIN-ON, TRIM 14-16#, TTL on FOB Basis,	0.90	0.95	1.12	1.23	1.39	1.46	1.20	1.25	1.55	1.24	1.50	1.60	1.57	1.55	1.34
BELLY, SKIN-ON, TRIM 16-18#, TTL on FOB Basis,	0.89	0.94	1.12	1.23	1.39	1.47	1.25	1.25	1.51	1.25	1.47	1.57	1.54	1.52	1.31
42CL PORK TRIM, FRESH, COMBO, USDA	0.36	0.27	0.45	0.46	0.56	0.54	0.63	0.56	0.70	0.59	0.63	0.67	0.70	0.62	0.58
72CL PORK TRIM, FRESH, COMBO, USDA	0.71	0.70	0.78	0.86	0.85	0.84	0.85	0.90	1.16	0.87	1.05	1.15	1.12	1.07	1.04
<b><u>HOG CARCASS</u></b>															
250-270# HOGS, US 1-3, INTERIOR IOWA DIRECT HOG MARKET	0.61	0.68	0.74	0.81	0.83	0.91	0.90	0.94	0.96	0.92	0.95	0.96	0.96	0.93	0.90
<b><u>BROILERS</u></b>															
12 CITY BROILER COMPOSITE WEIGHTED AVG.	0.81	0.78	0.77	0.75	0.82	0.82	0.85	0.82	0.89	0.83	0.89	0.90	0.88	0.88	0.86
N.E. BROILER BREAST BONELESS-SKINLESS, USDA	1.20	1.14	1.14	1.20	1.34	1.36	1.30	1.29	1.50	1.31	1.49	1.55	1.56	1.48	1.30
N.E. BROILER BREAST LINE RUN, USDA	0.72	0.73	0.75	0.77	0.88	0.91	0.89	0.87	1.01	0.88	0.98	0.99	0.98	0.95	0.83
N.E. BROILER LEG QUARTERS, USDA	0.40	0.37	0.35	0.37	0.43	0.48	0.50	0.51	0.52	0.50	0.54	0.55	0.56	0.54	0.46
N.E. BROILER WINGS, USDA	1.23	1.14	1.09	0.97	0.86	0.83	0.87	0.79	0.81	0.81	0.81	0.96	0.96	1.16	1.22
<b><u>TURKEYS</u></b>															
HEN TURKEYS, EAST, FROZEN 10-12LBS,	1.09	1.00	0.92	0.93	0.95	0.98	1.01	1.02	1.02	1.01	1.03	1.04	1.08	1.12	1.16
UB BONELESS-SKINLESS TURKEY BREAST, TOM, FRESH,	2.75	2.65	2.42	2.23	2.28	2.50	2.50	2.50	2.66	2.50	2.68	2.76	3.02	3.28	3.44
<b><u>LIVE STEERS</u></b>															
FIVE AREA DIRECT AVERAGE LIVE STEER, USDA	0.99	1.02	1.06	1.06	1.14	1.21	1.15	1.09	1.10	1.11	1.08	1.08	1.12	1.16	1.17
<b><u>BEEF</u></b>															
CHOICE, 112A, 3 RIBEYE, BONELESS, HEAVY, USDA	5.90	5.51	4.77	4.81	5.19	5.82	5.59	5.18	5.49	5.39	5.52	5.56	5.42	5.39	5.88
CHOICE, 168, 3 TOP INSIDE ROUND, 1/4" MAX, USDA	1.78	1.94	2.13	1.92	2.19	2.14	2.01	2.08	2.15	2.06	2.09	2.00	2.18	2.21	2.19
CHOICE, 170, 1 BOTTOM GOOSENECK ROUND, USDA	1.71	1.71	1.89	1.92	2.03	1.99	1.88	1.85	1.72	1.90	1.73	1.77	1.89	1.96	2.06
CHOICE, 180, 3 STRIP LOIN, BONELESS, 0x1, USDA	4.08	3.93	4.08	4.29	5.09	5.97	5.08	4.89	5.45	5.11	5.18	5.18	5.07	4.98	4.69
CHOICE, 184, 3 TOP BUTT, BONELESS, USDA	2.39	2.49	2.63	2.58	2.76	2.80	2.44	2.25	2.53	2.37	2.48	2.63	2.80	2.77	2.63
CHOICE, 185A, 4 BOTTOM SIRLOIN, FLAP, USDA	2.66	2.64	3.11	3.23	3.82	3.68	3.49	3.74	3.67	3.62	3.69	3.65	3.35	3.02	2.99
COARSE GROUND 73%, USDA	1.18	1.37	1.74	1.69	1.60	1.77	1.74	1.68	1.62	1.70	1.60	1.54	1.63	1.60	1.62
COARSE GROUND 81%, USDA	1.33	1.49	1.87	1.97	1.88	1.94	1.86	1.93	1.79	1.89	1.74	1.71	1.78	1.76	1.74
90% BONELESS BEEF, CENTRAL, FRESH, USDA	1.47	1.60	1.83	1.97	1.97	2.03	2.00	1.98	2.00	1.99	1.96	2.00	2.03	1.94	1.93
50CL BEEF TRIM, FRESH, OMAHA BASIS, USDA	0.74	0.77	0.82	0.77	0.98	1.02	1.03	1.17	0.96	1.09	0.94	0.91	0.96	0.83	0.85

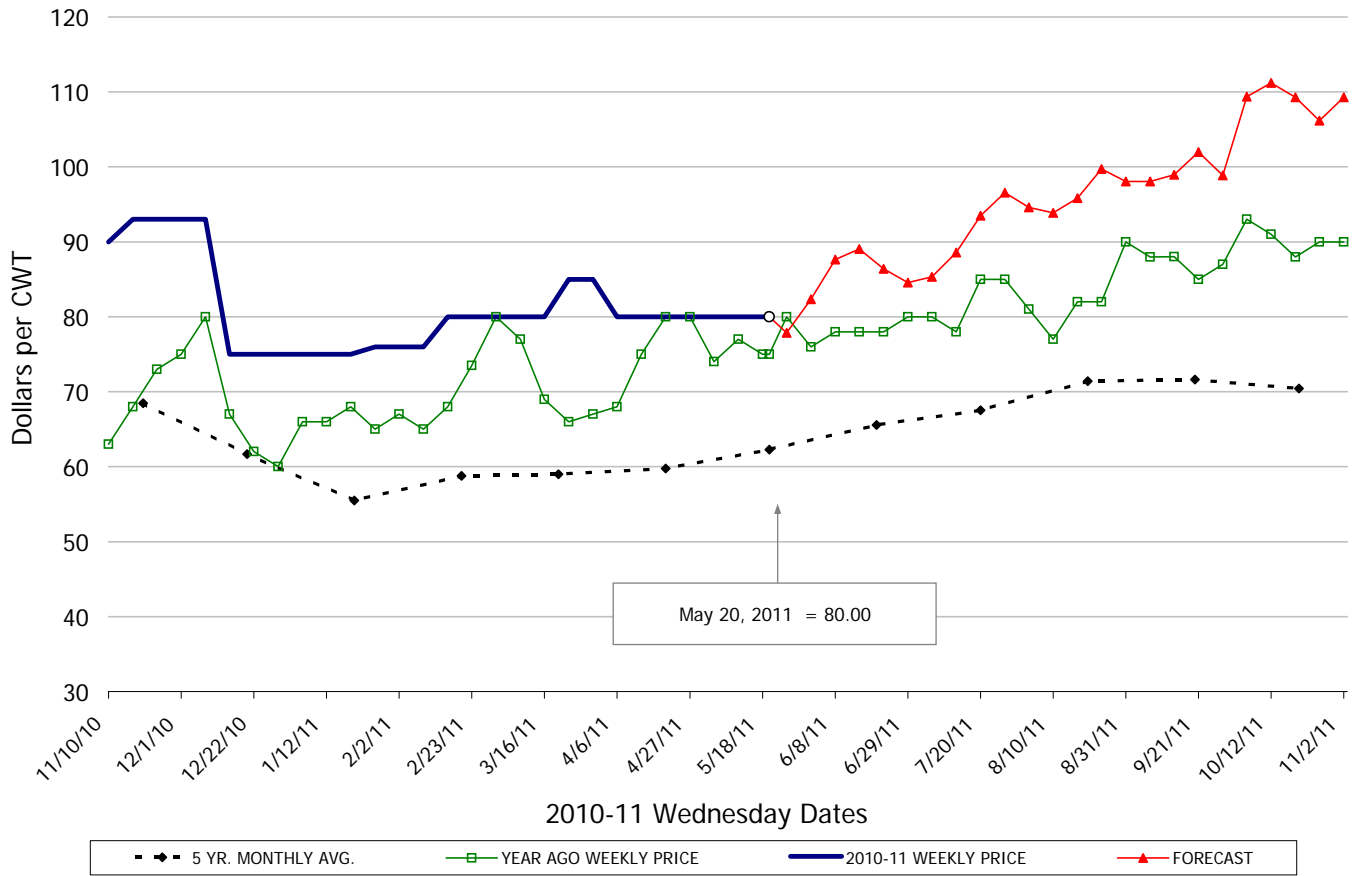
**TRIM LOIN, 1/4" Trim 21#DN-LGT, TTL on FOB Basis, USDA**



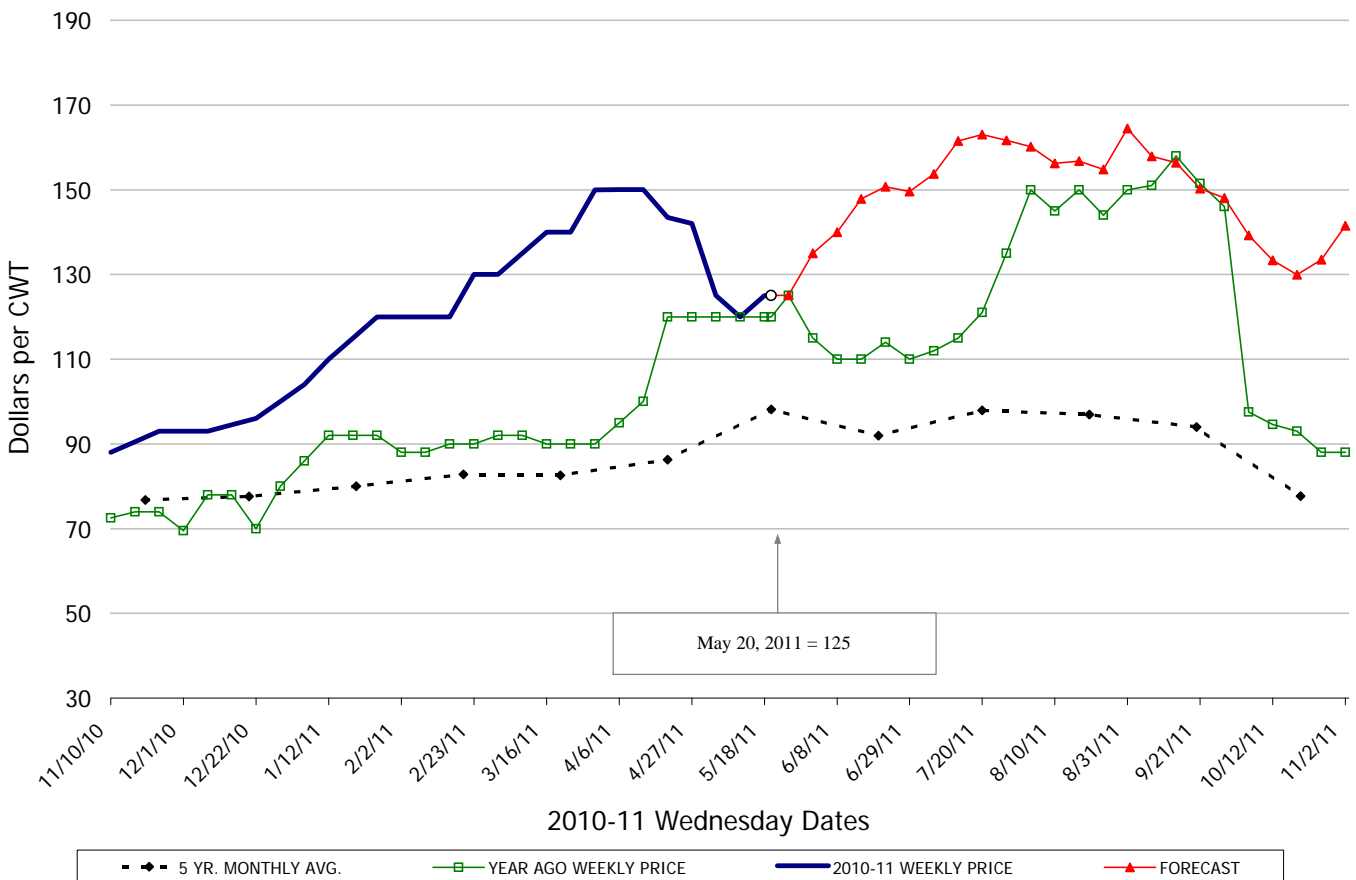
**SPARERIBS, 3 BAG/3 PCVAC 4.25#/DN-LG, TTL on FOB Basis, USDA**



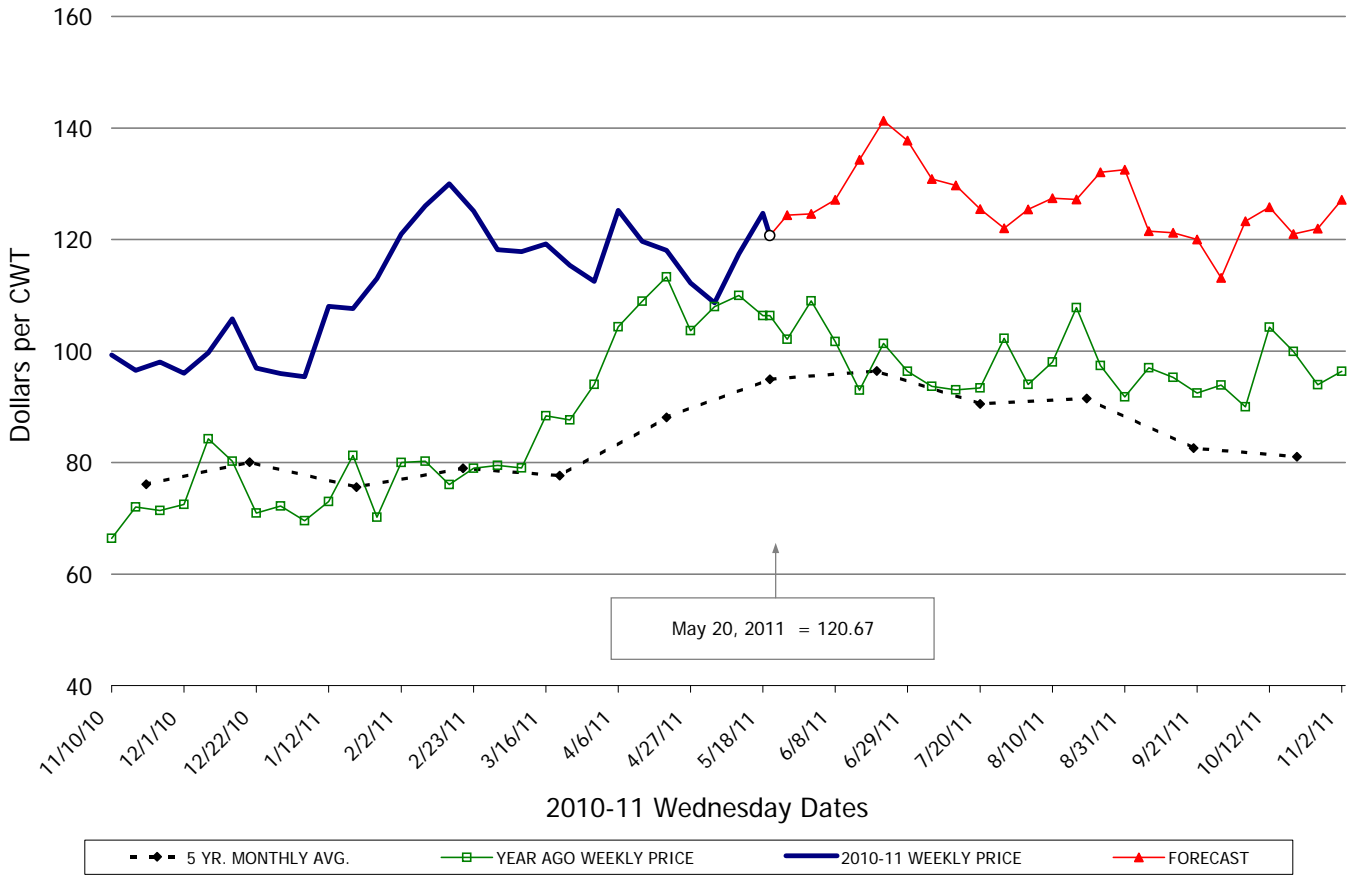
**SKINNED HAM, BONE-IN, 17-20#, TTL on FOB Basis, USDA**



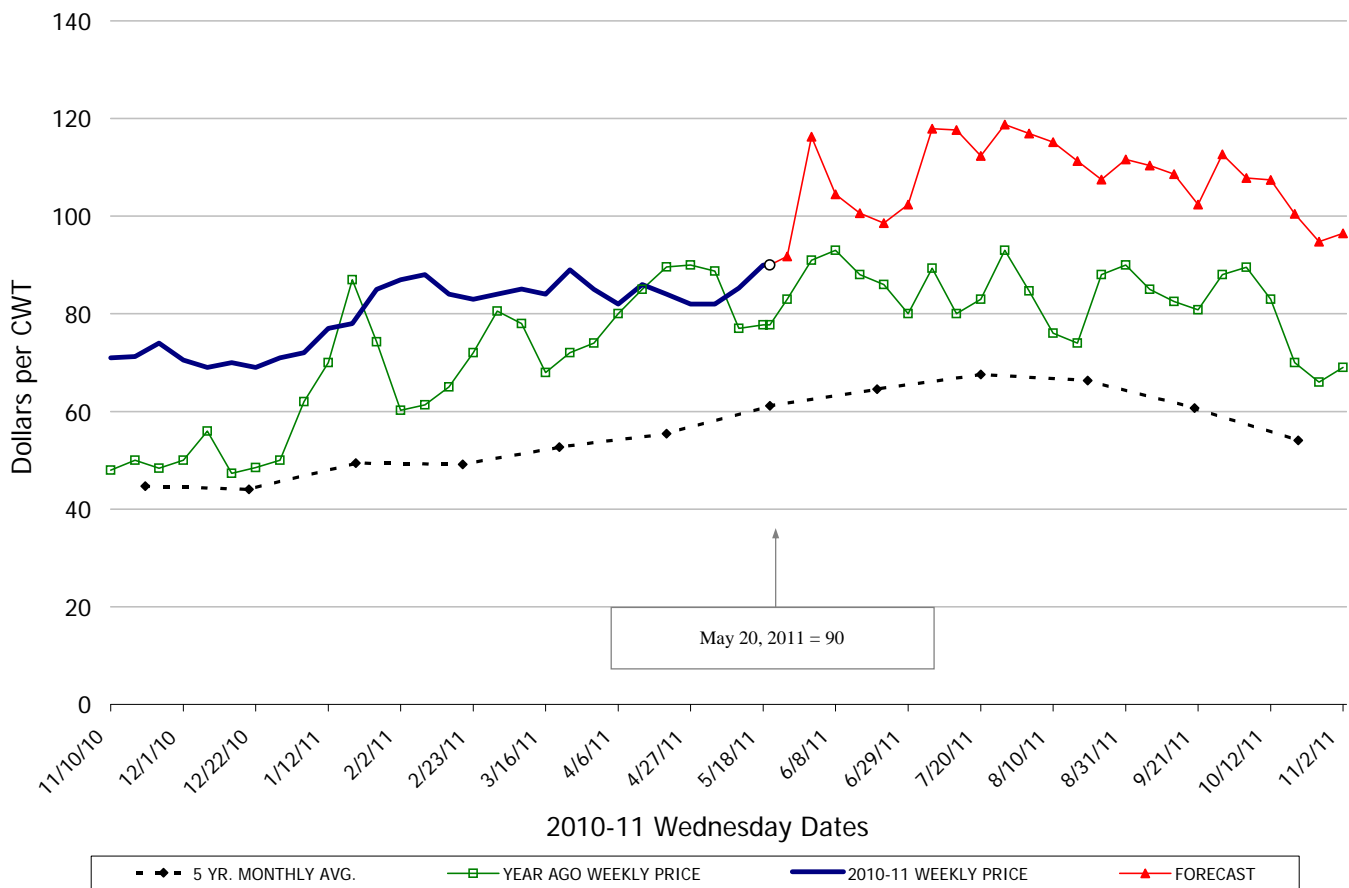
**BELLY, SKIN-ON, TRIM 14-16#, TTL on FOB Basis,**



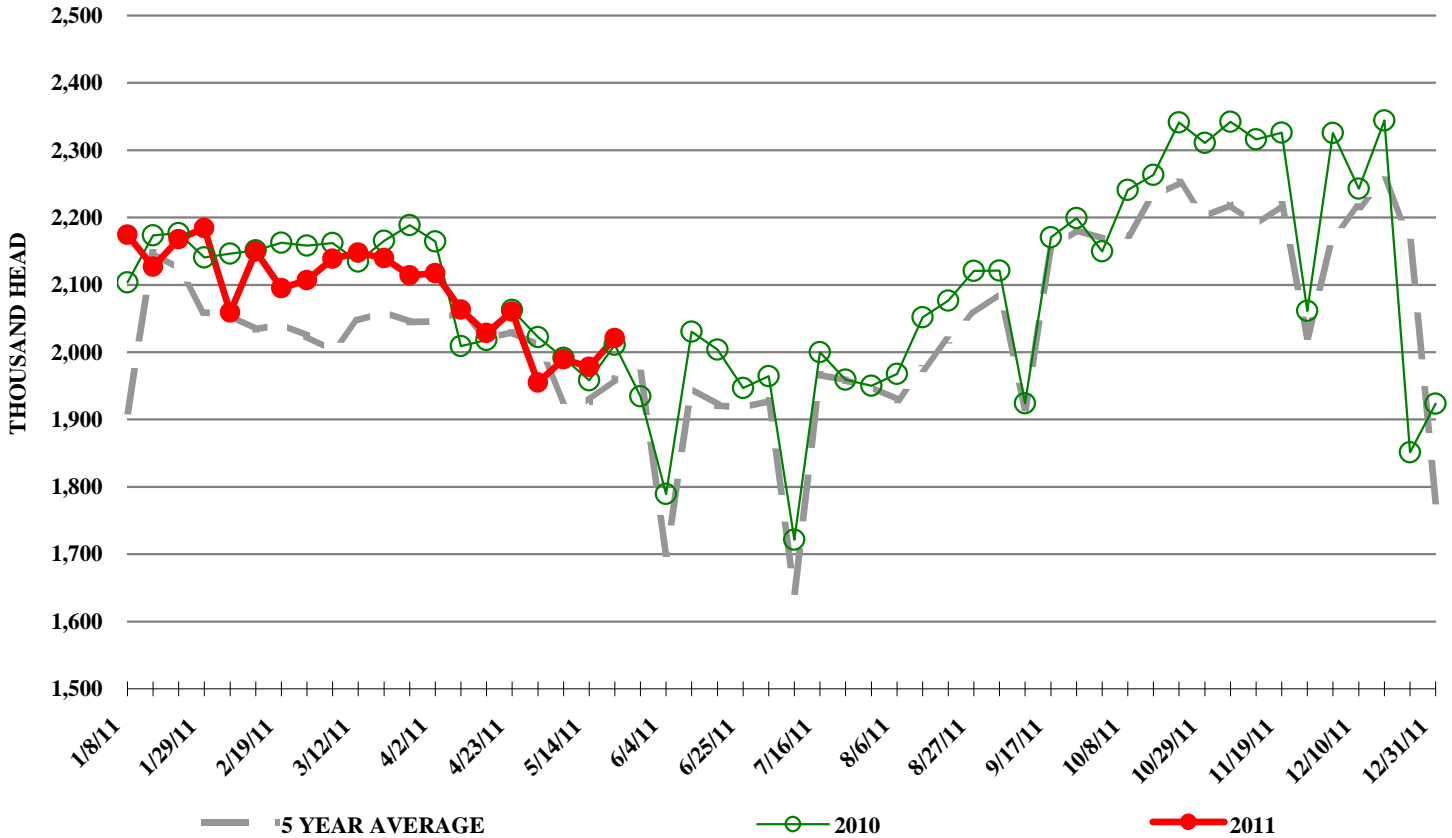
**TRIMMED BUTT, 1/4" TRM 5-10#, TTL on FOB Basis, USDA**



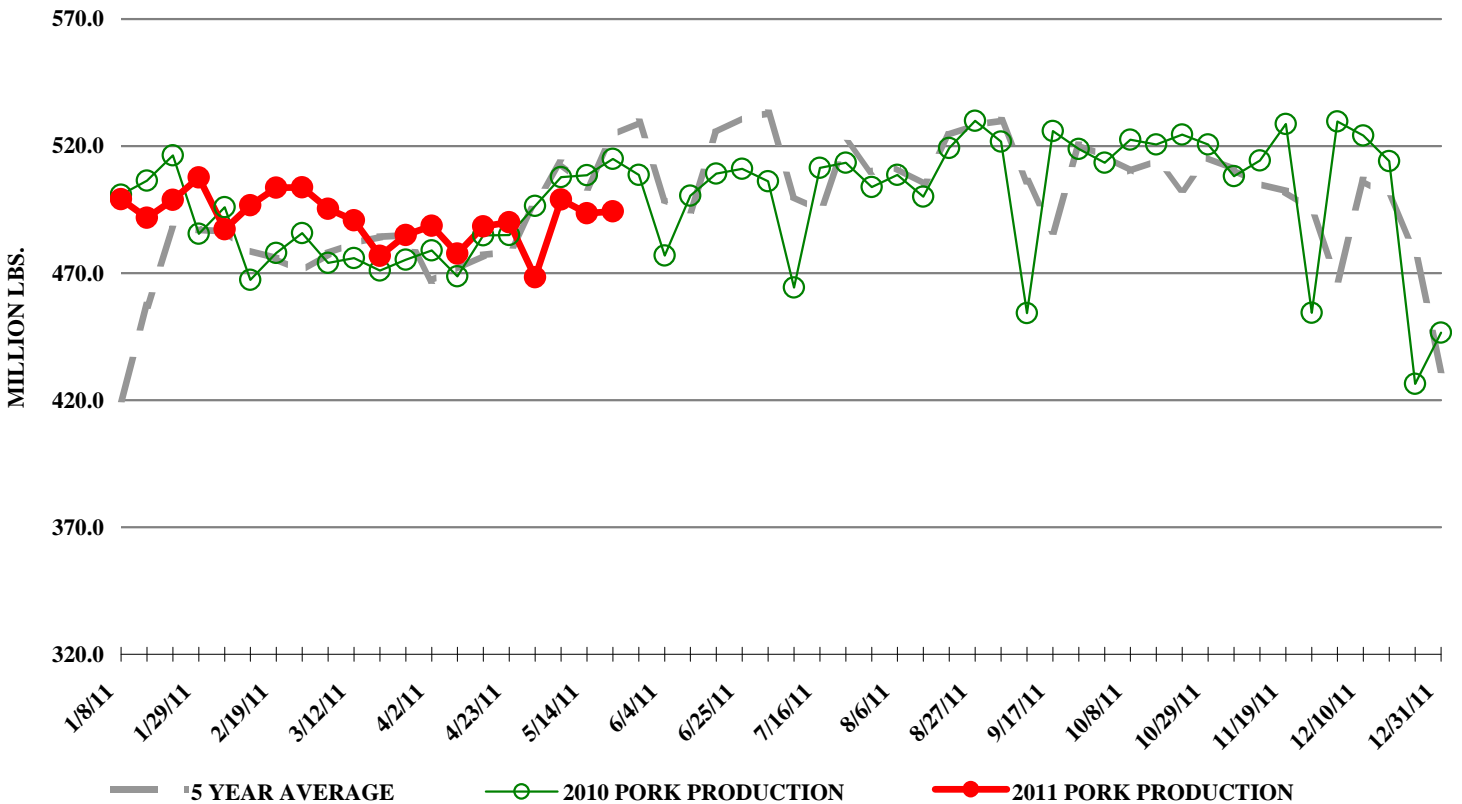
**72CL PORK TRIM, FRESH, COMBO, USDA**



## ESTIMATED WEEKLY FI HOG SLAUGHTER



## ESTIMATED WEEKLY FI PORK PRODUCTION



# A SUMMARY OF THE:

# USDA

## APRIL 30<sup>TH</sup>, 2011 COLD STORAGE REPORT

Prepared by: Steiner Consulting Group, 800-526-4612

Friday, May 20, 2011

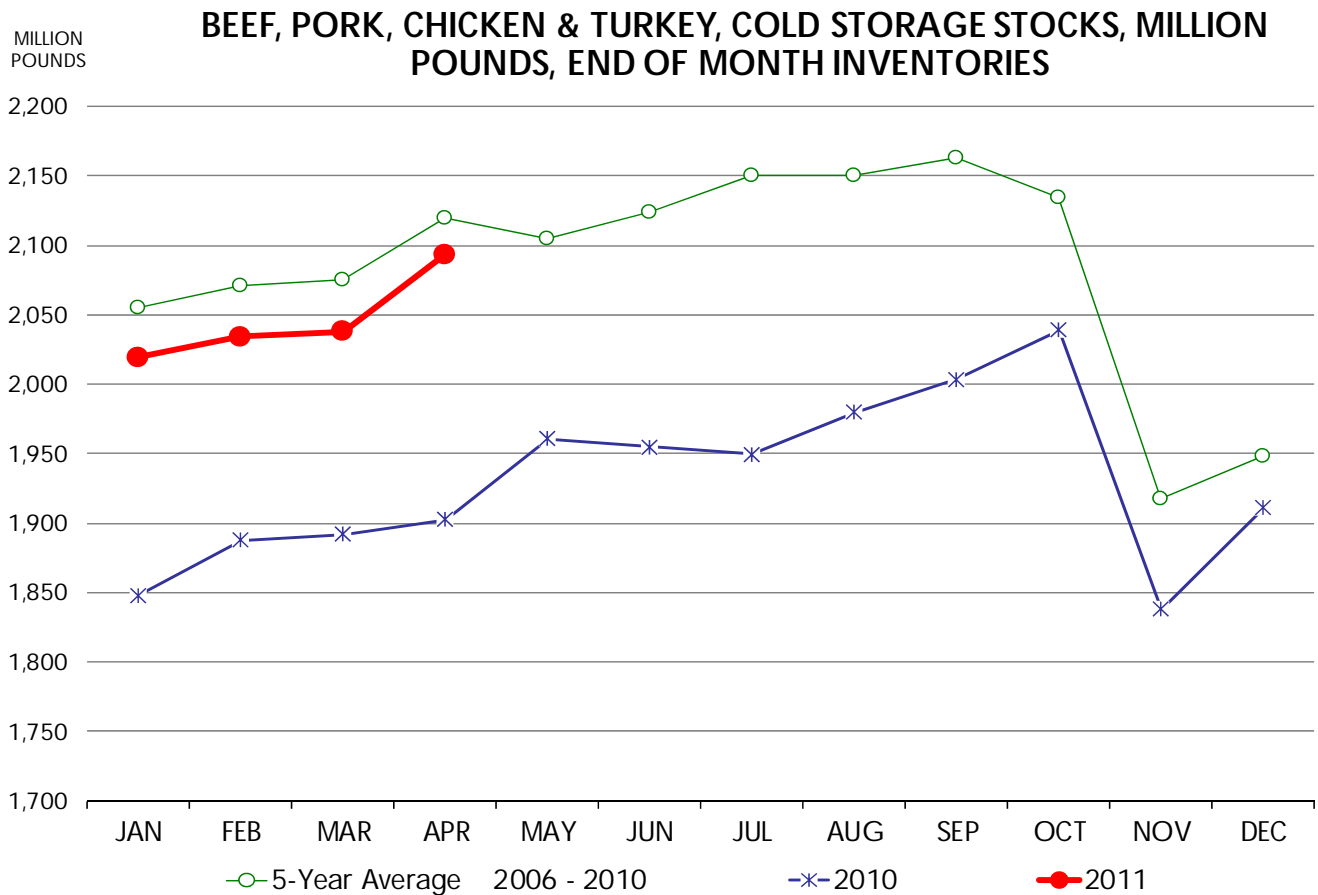
### USDA STOCKS IN COLD STORAGE REPORT

COMMODITY	Stocks in All Warehouses			Percent Of	
	30-Apr-10	31-Mar-11	30-Apr-11	Apr-10	Mar-11
	1,000 Pounds				
<b>Frozen Pork</b>					
<i>Picnics, Bone-In</i>	8,304	11,254	9,491	114	84
<i>Hams, Total</i>	76,469	105,065	76,713	100	73
<i>Bone-in</i>	31,076	49,814	35,105	113	70
<i>Boneless</i>	45,393	55,251	41,608	92	75
<i>Bellies</i>	49,656	52,487	53,189	107	101
<i>Loins, Total</i>	35,261	38,218	33,185	94	87
<i>Bone-in</i>	14,151	13,351	12,140	86	91
<i>Boneless</i>	21,110	24,867	21,045	100	85
<i>Ribs</i>	81,134	96,818	96,970	120	100
<i>Butts</i>	19,210	26,672	26,831	140	101
<i>Trimmings</i>	44,985	52,721	54,407	121	103
<i>Other</i>	94,346	95,454	93,187	99	98
<i>Variety Meats</i>	19,733	33,434	32,375	164	97
<i>Unclassified</i>	54,612	62,275	69,456	127	112
<b>Total</b>	<b>483,710</b>	<b>574,398</b>	<b>545,804</b>	<b>113</b>	<b>95</b>
<b>Frozen Beef</b>					
<i>Boneless</i>	310,570	384,413	382,932	123	100
<i>Beef Cuts</i>	58,915	61,113	59,860	102	98
<b>Total</b>	<b>369,485</b>	<b>445,526</b>	<b>442,792</b>	<b>120</b>	<b>99</b>
<b>Other</b>					
<i>Veal</i>	6,625	3,779	3,836	58	102
<i>Lamb &amp; Mutton</i>	16,453	12,874	13,278	81	103
<b>Total</b>	<b>23,078</b>	<b>16,653</b>	<b>17,114</b>	<b>74</b>	<b>103</b>
<b>Total Red Meat</b>	<b>876,273</b>	<b>1,036,577</b>	<b>1,005,710</b>	<b>115</b>	<b>97</b>
<b>Chicken</b>					
<i>Broilers (Whole)</i>	19,842	20,489	21,094	106	103
<i>Hens</i>	1,685	3,981	3,816	226	96
<i>Other Chicken</i>	607,380	671,994	719,425	118	107
<b>Total</b>	<b>628,907</b>	<b>696,464</b>	<b>744,335</b>	<b>118</b>	<b>107</b>
<b>Turkey</b>					
<i>Whole Turkeys</i>	209,652	148,261	180,690	86	122
<i>Turkey Breast</i>	82,641	57,933	61,851	75	107
<i>Other</i>	129,771	119,494	121,863	94	102
<b>Total</b>	<b>422,064</b>	<b>325,688</b>	<b>364,404</b>	<b>86</b>	<b>112</b>
<i>Ducks</i>	3,752	6,173	6,886	184	112
<b>Total Poultry</b>	<b>1,054,723</b>	<b>1,028,325</b>	<b>1,115,625</b>	<b>106</b>	<b>108</b>

## BEEF, PORK, CHICKEN & TURKEY, COLD STORAGE STOCKS

MILLION POUNDS, END OF MONTH INVENTORIES

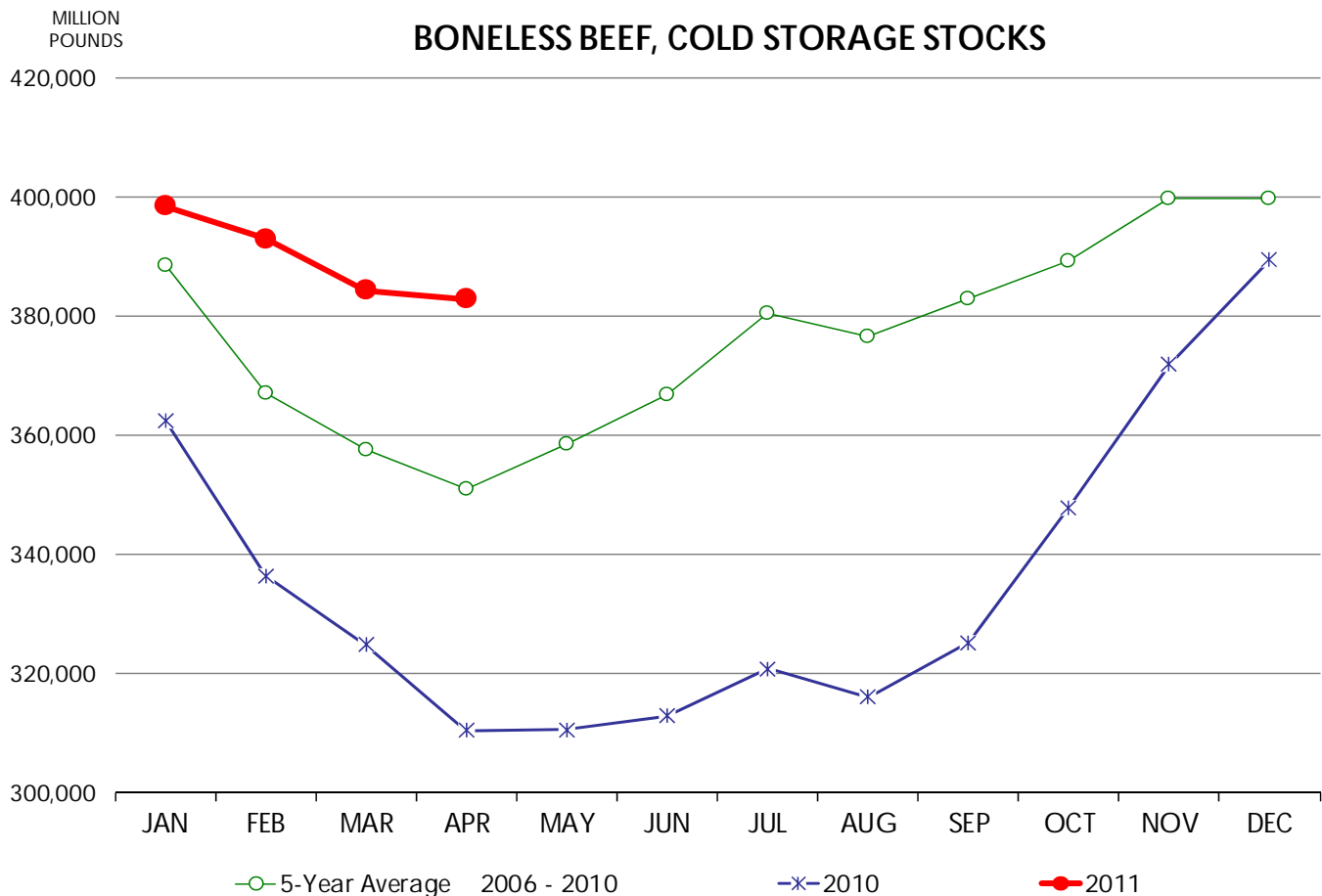
	2006	2007	2008	2009	2010	2011	5-Year Average 2006 - 2010
January	2,173	1,921	2,125	2,206	1,848	2,020	2,055
February	2,206	1,871	2,224	2,164	1,888	2,034	2,071
March	2,183	1,860	2,275	2,165	1,892	2,038	2,075
April	2,219	1,906	2,321	2,249	1,902	2,094	2,120
May	2,157	1,907	2,274	2,226	1,961		2,105
June	2,143	1,983	2,285	2,256	1,955		2,124
July	2,127	2,085	2,290	2,302	1,949		2,151
August	2,098	2,108	2,322	2,245	1,980		2,151
September	2,114	2,143	2,355	2,201	2,004		2,163
October	2,092	2,088	2,359	2,093	2,039		2,134
November	1,889	1,871	2,175	1,815	1,838		1,918
December	1,888	1,941	2,207	1,794	1,911		1,948



**BONELESS BEEF, COLD STORAGE STOCKS**

THOUSAND POUNDS, END OF MONTH INVENTORIES

	2006	2007	2008	2009	2010	2011	5-Year Average 2006 - 2010
January	403,940	402,725	382,386	391,691	362,605	398,552	388,669
February	383,508	387,187	359,145	369,433	336,500	393,061	367,155
March	384,491	366,018	351,252	361,064	324,875	384,413	357,540
April	387,740	358,892	350,909	346,537	310,570	382,932	350,930
May	398,910	365,524	359,928	358,042	310,685		358,618
June	401,321	381,904	362,621	375,531	312,938		366,863
July	427,832	411,456	368,464	373,924	320,843		380,504
August	419,393	423,986	365,222	358,949	316,140		376,738
September	426,944	421,715	376,923	363,513	325,304		382,880
October	418,676	420,255	392,795	366,840	347,870		389,287
November	449,361	403,953	402,399	371,515	371,902		399,826
December	411,565	409,933	415,048	373,133	389,440		399,824



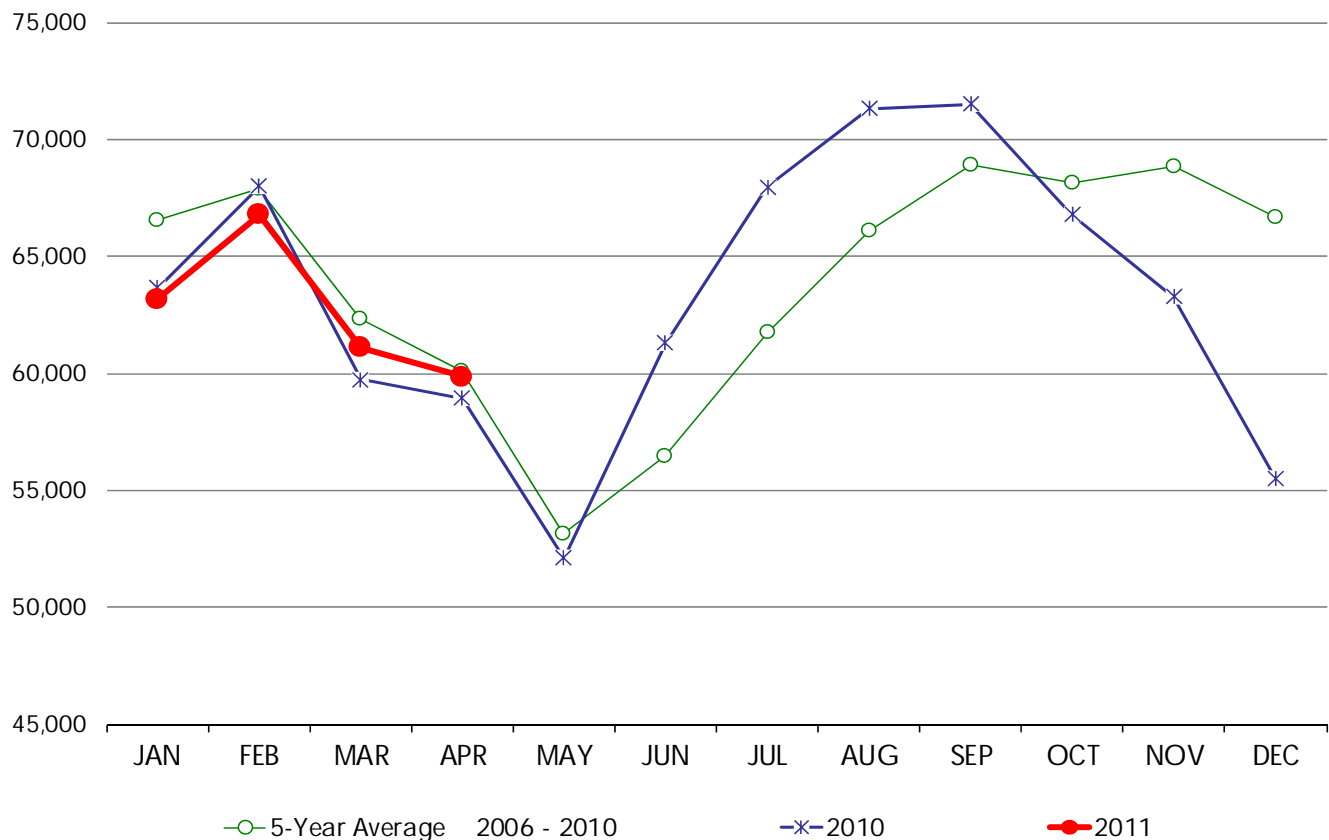
**BEEF CUTS, COLD STORAGE STOCKS**

THOUSAND POUNDS, END OF MONTH INVENTORIES

	2006	2007	2008	2009	2010	2011	5-Year Average 2006 - 2010
January	61,942	67,846	68,396	70,956	63,654	63,182	66,559
February	57,056	71,713	77,404	65,081	68,005	66,772	67,852
March	51,666	59,877	75,456	64,814	59,721	61,113	62,307
April	53,526	58,364	65,445	64,168	58,915	59,860	60,084
May	47,369	45,956	60,437	59,833	52,098		53,139
June	47,791	48,419	65,497	59,273	61,285		56,453
July	51,386	56,277	62,354	70,883	67,961		61,772
August	65,102	56,958	75,928	61,147	71,298		66,087
September	64,972	65,009	77,597	65,400	71,514		68,898
October	67,037	67,778	78,184	60,876	66,777		68,130
November	70,964	71,354	79,165	59,398	63,272		68,831
December	70,514	72,576	77,589	57,147	55,523		66,670

MILLION POUNDS

**BEEF CUTS, COLD STORAGE STOCKS**



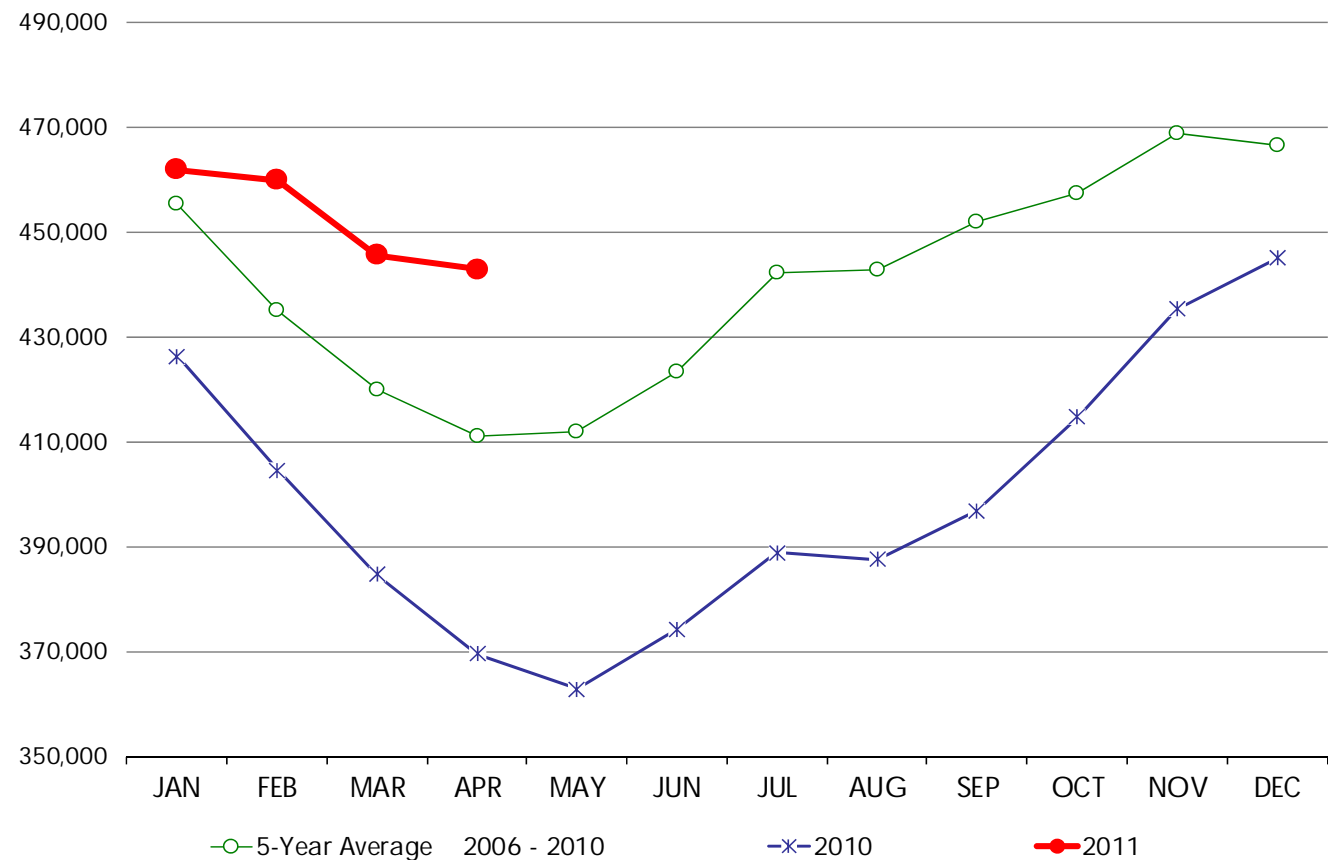
**TOTAL BEEF, COLD STORAGE STOCKS**

THOUSAND POUNDS, END OF MONTH INVENTORIES

	2006	2007	2008	2009	2010	2011	5-Year Average 2006 - 2010
January	465,882	470,571	450,782	462,647	426,259	461,734	455,228
February	440,564	458,900	436,549	434,514	404,505	459,833	435,006
March	436,157	425,895	426,708	425,878	384,596	445,526	419,847
April	441,266	417,256	416,354	410,705	369,485	442,792	411,013
May	446,279	411,480	420,365	417,875	362,783		411,756
June	449,112	430,323	428,118	434,804	374,223		423,316
July	479,218	467,733	430,818	444,807	388,804		442,276
August	484,495	480,944	441,150	420,096	387,438		442,825
September	491,916	486,724	454,520	428,913	396,818		451,778
October	485,713	488,033	470,979	427,716	414,647		457,418
November	520,325	475,307	481,564	430,913	435,174		468,657
December	482,079	482,509	492,637	430,280	444,963		466,494

MILLION POUNDS

**TOTAL BEEF, COLD STORAGE STOCKS**



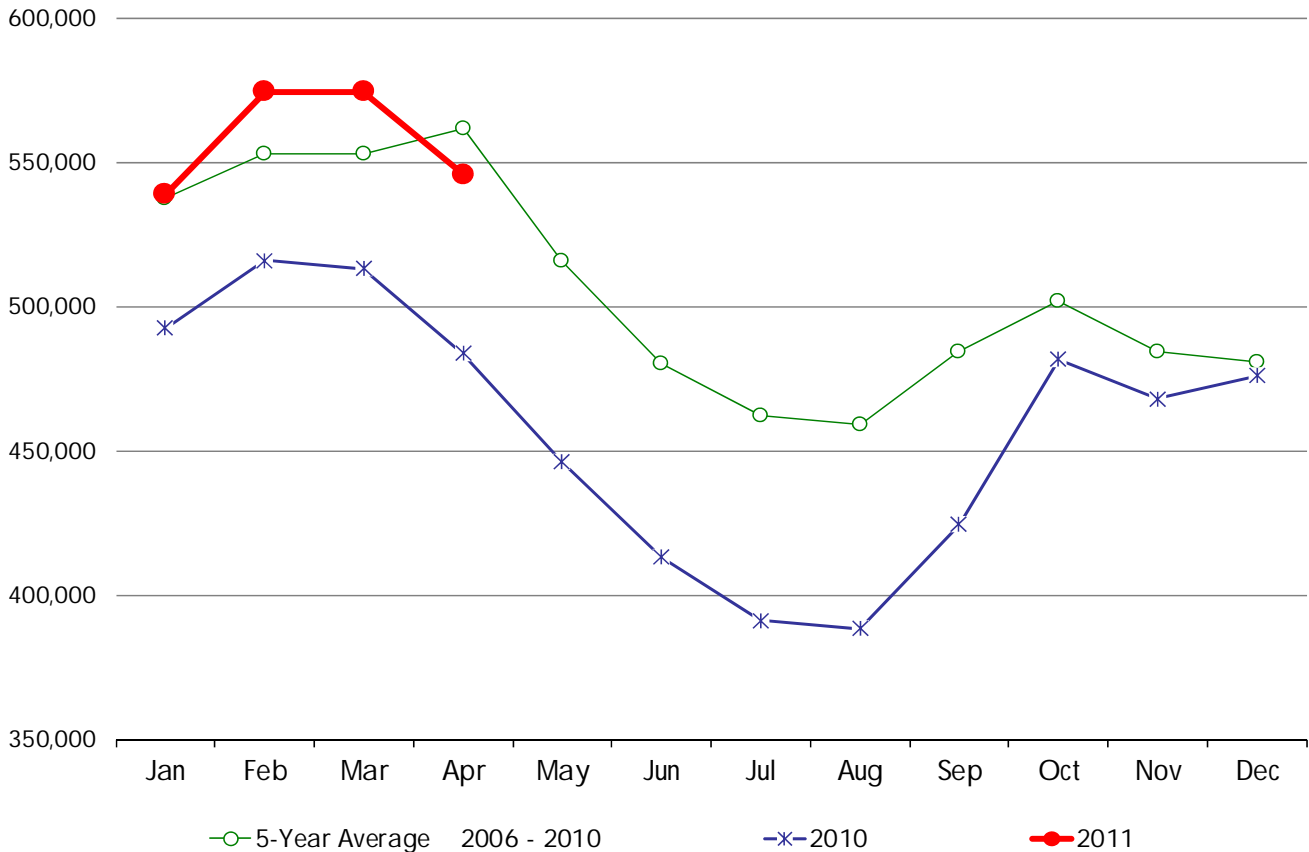
**FROZEN PORK, COLD STORAGE STOCKS**

THOUSAND POUNDS, END OF MONTH INVENTORIES

	2006	2007	2008	2009	2010	2011	5-Year Average 2006 - 2010
January	527,677	484,302	574,929	606,936	492,287	538,754	537,226
February	528,251	483,200	611,830	624,477	515,911	574,236	552,734
March	504,978	494,761	657,344	594,127	513,066	574,398	552,855
April	520,022	528,527	663,443	612,290	483,710	545,804	561,598
May	477,005	491,950	579,403	584,544	446,049		515,790
June	412,622	467,949	530,123	577,914	412,983		480,318
July	417,769	455,854	505,269	539,700	391,193		461,957
August	415,563	458,252	502,669	530,148	388,292		458,985
September	458,359	484,934	526,168	528,681	424,322		484,493
October	488,409	494,751	528,031	516,300	481,653		501,829
November	468,476	474,571	526,680	482,816	467,950		484,099
December	442,501	458,665	555,642	471,125	475,829		480,752

MILLION  
POUNDS

**FROZEN PORK, COLD STORAGE STOCKS**



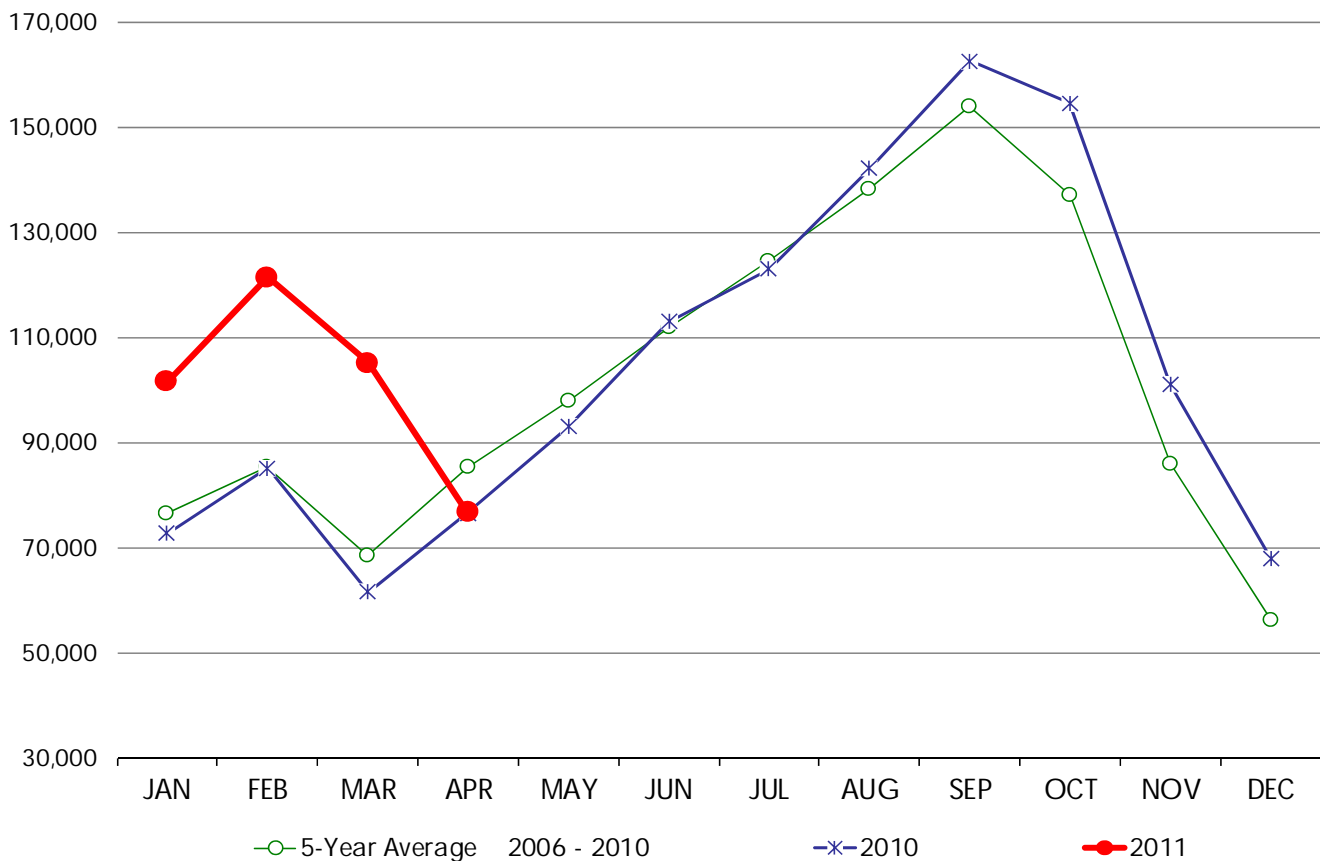
### HAMS, COLD STORAGE STOCKS

THOUSAND POUNDS, END OF MONTH INVENTORIES

	2006	2007	2008	2009	2010	2011	5-Year Average 2006 - 2010
January	67,267	66,306	88,937	87,537	72,736	101,485	76,557
February	79,074	72,953	92,884	96,205	85,153	121,311	85,254
March	57,268	57,475	94,834	70,894	61,579	105,065	68,410
April	69,635	79,617	123,971	77,334	76,469	76,713	85,405
May	72,704	97,162	131,159	95,269	92,951		97,849
June	78,847	121,072	130,038	116,525	113,009		111,898
July	90,271	134,867	145,101	128,619	122,987		124,369
August	106,628	149,134	157,696	135,921	142,071		138,290
September	113,325	162,660	181,431	149,156	162,465		153,807
October	111,415	136,129	154,041	129,543	154,527		137,131
November	65,259	75,380	104,722	83,377	101,097		85,967
December	39,682	48,999	74,215	50,419	67,965		56,256

MILLION POUNDS

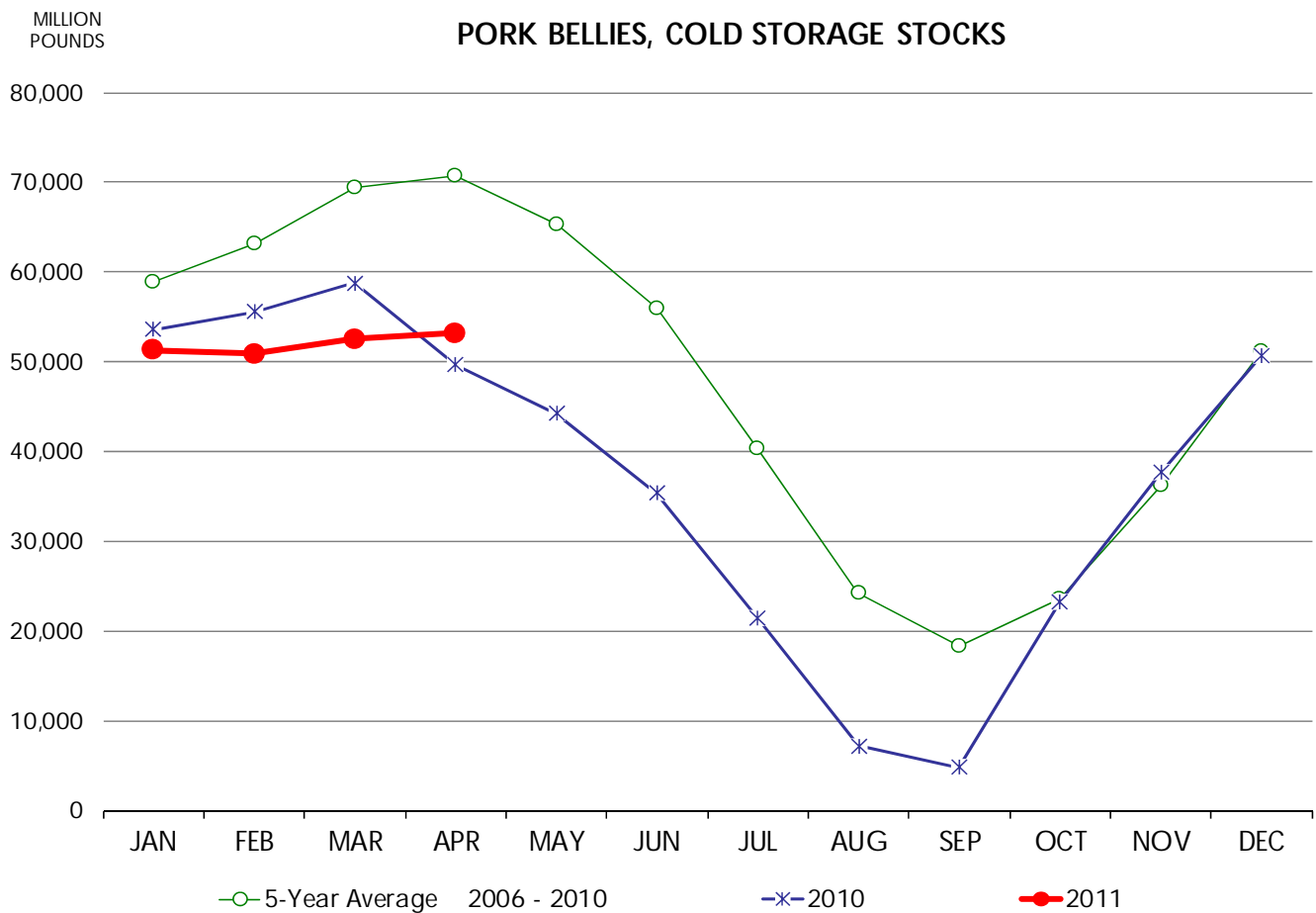
### HAMS, COLD STORAGE STOCKS



**PORK BELLIES, COLD STORAGE STOCKS**

THOUSAND POUNDS, END OF MONTH INVENTORIES

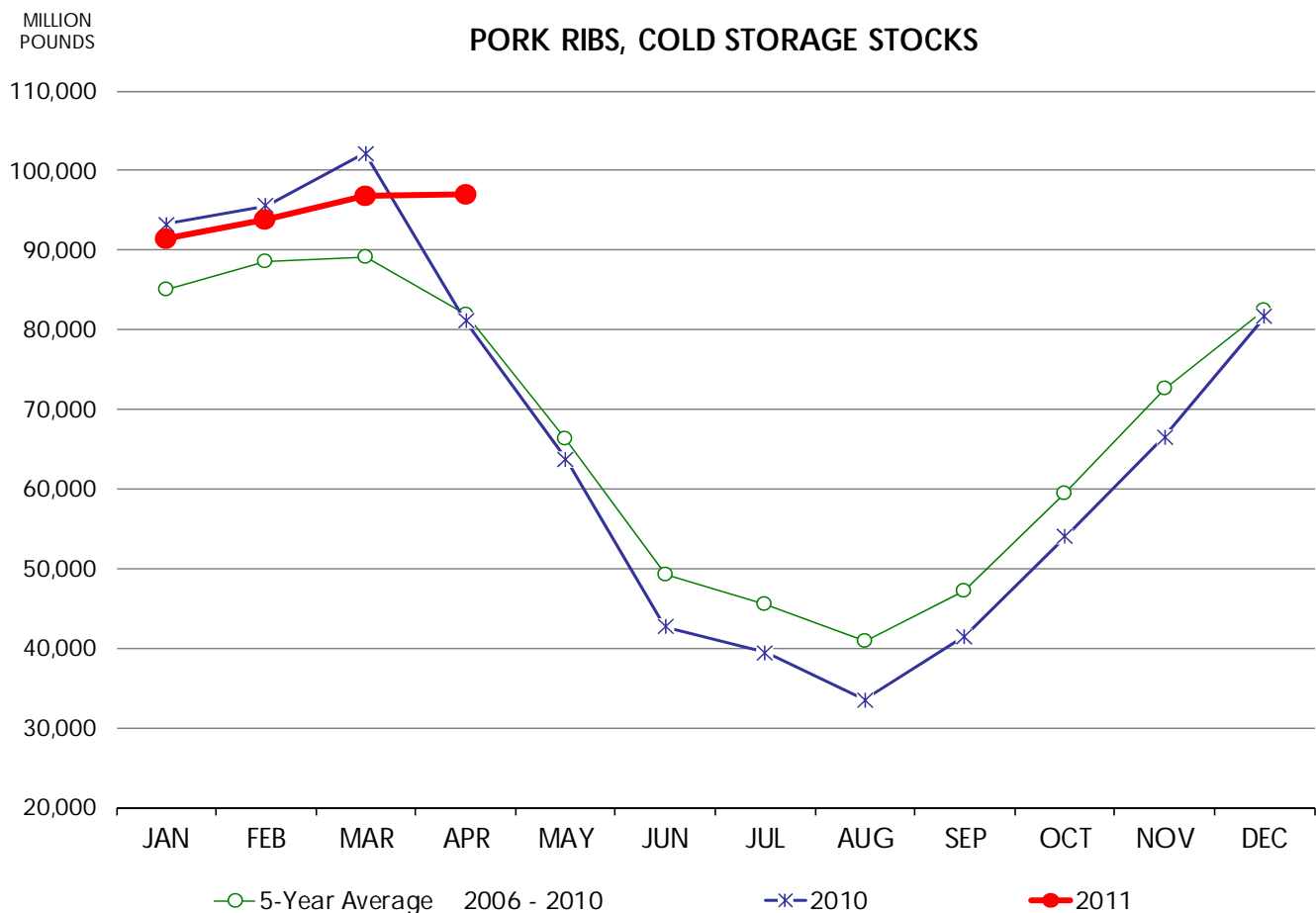
	2006	2007	2008	2009	2010	2011	5-Year Average 2006 - 2010
January	54,902	46,227	70,647	69,166	53,584	51,326	58,905
February	58,861	46,643	79,282	75,668	55,552	50,900	63,201
March	61,628	55,160	98,896	72,940	58,762	52,487	69,477
April	62,665	61,796	100,189	79,543	49,656	53,189	70,770
May	58,803	57,294	87,428	78,801	44,201		65,305
June	46,056	47,214	74,372	76,333	35,369		55,869
July	30,506	31,619	57,964	60,238	21,380		40,341
August	11,962	21,410	31,878	48,958	7,202		24,282
September	10,199	17,050	21,270	38,481	4,817		18,363
October	15,597	20,356	21,696	37,127	23,248		23,605
November	30,553	34,328	33,490	44,638	37,696		36,141
December	41,917	54,746	51,593	56,764	50,677		51,139



**PORK RIBS, COLD STORAGE STOCKS**

THOUSAND POUNDS, END OF MONTH INVENTORIES

	2006	2007	2008	2009	2010	2011	5-Year Average 2006 - 2010
January	92,826	79,322	72,254	87,854	93,298	91,404	85,111
February	90,277	80,341	83,769	92,883	95,530	93,825	88,560
March	86,679	83,351	87,121	86,375	102,190	96,818	89,143
April	88,341	77,922	74,677	87,323	81,134	96,970	81,879
May	74,784	59,448	61,818	71,558	63,762		66,274
June	55,136	43,662	46,425	58,015	42,662		49,180
July	53,299	39,433	42,878	52,450	39,452		45,502
August	49,697	33,657	39,727	47,936	33,462		40,896
September	56,083	39,642	44,664	54,005	41,515		47,182
October	68,193	50,785	56,439	67,700	54,023		59,428
November	78,566	62,223	71,240	84,466	66,559		72,611
December	84,669	68,189	82,013	96,000	81,626		82,499



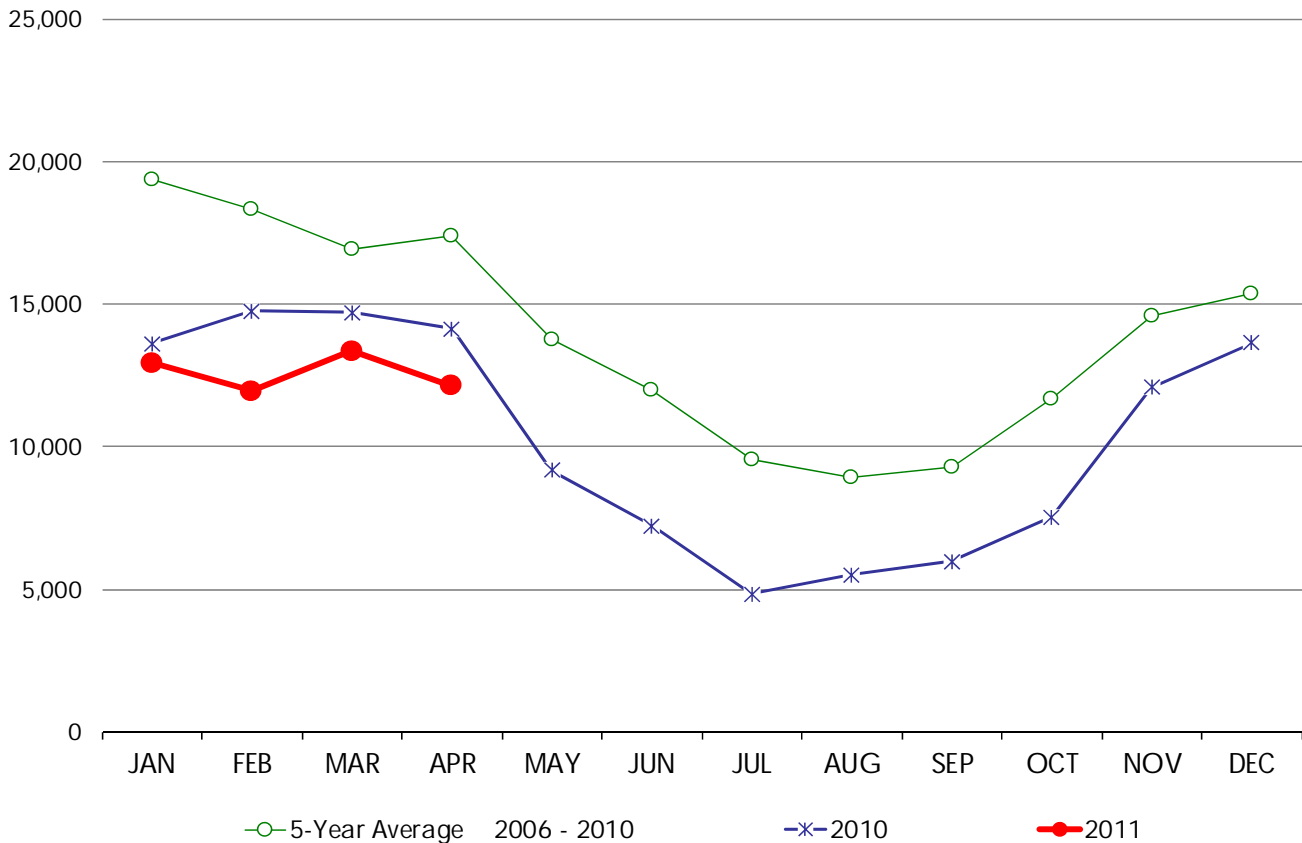
**PORK LOINS, BONE-IN, COLD STORAGE STOCKS**

THOUSAND POUNDS, END OF MONTH INVENTORIES

	2006	2007	2008	2009	2010	2011	5-Year Average 2006 - 2010
January	28,925	16,040	17,582	20,608	13,631	12,956	19,357
February	24,987	13,449	18,270	20,141	14,751	11,954	18,320
March	17,936	13,184	18,082	20,774	14,712	13,351	16,938
April	18,990	13,878	19,749	20,286	14,151	12,140	17,411
May	16,407	11,226	16,009	16,079	9,181		13,780
June	13,009	10,449	15,455	13,932	7,222		12,013
July	11,184	8,518	12,450	10,713	4,855		9,544
August	11,617	8,343	10,451	8,645	5,521		8,915
September	14,094	8,380	9,722	8,174	5,990		9,272
October	18,900	10,468	11,294	10,247	7,551		11,692
November	15,496	15,591	15,485	14,378	12,083		14,607
December	14,751	15,271	18,043	15,077	13,634		15,355

MILLION POUNDS

**PORK LOINS, BONE-IN, COLD STORAGE STOCKS**



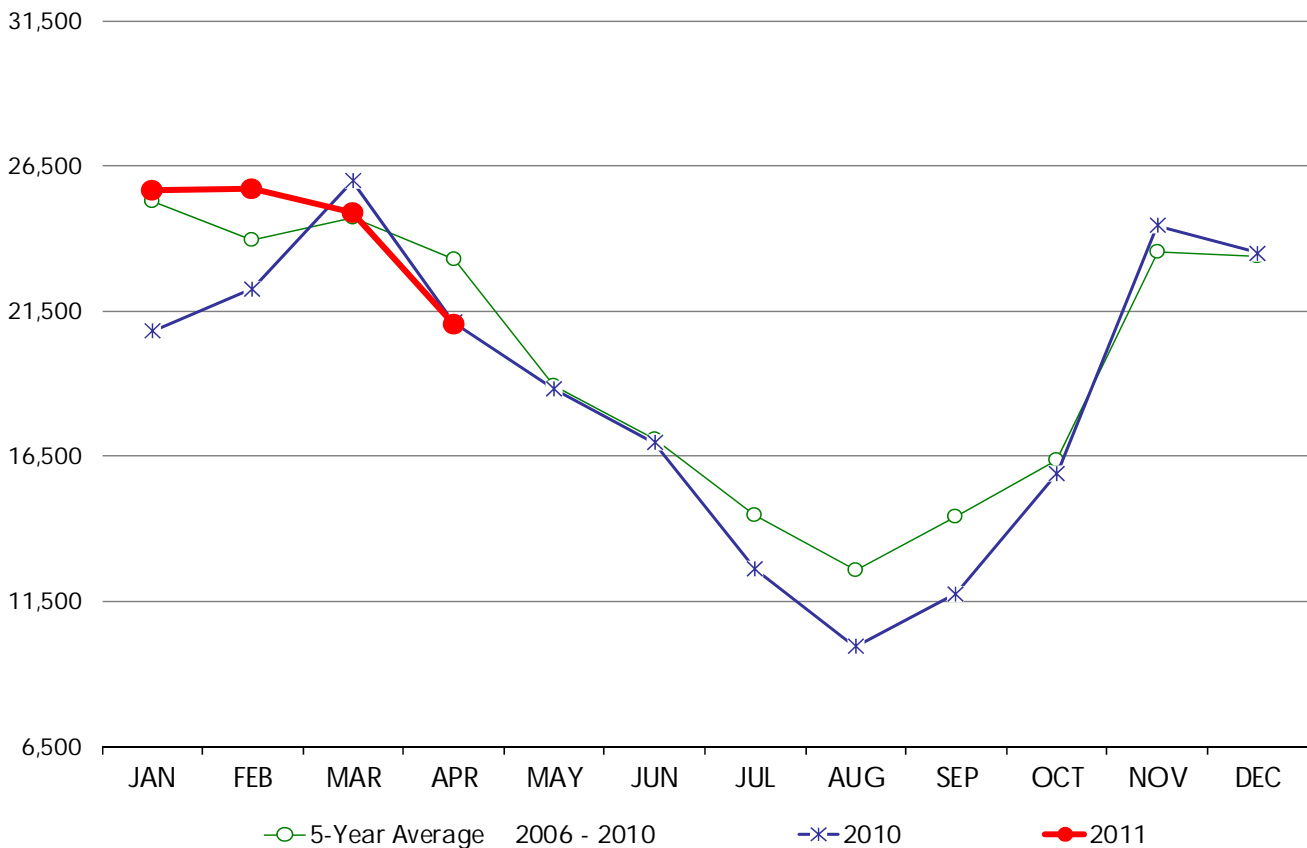
**PORK LOINS, BONELESS, COLD STORAGE STOCKS**

THOUSAND POUNDS, END OF MONTH INVENTORIES

	2006	2007	2008	2009	2010	2011	5-Year Average 2006 - 2010
January	22,954	23,881	28,068	30,749	20,809	25,648	25,292
February	21,507	22,855	29,081	23,907	22,266	25,710	23,923
March	19,856	24,054	30,458	23,192	25,992	24,867	24,710
April	22,038	24,153	26,943	22,130	21,110	21,045	23,275
May	16,367	20,333	20,876	18,191	18,806		18,915
June	15,067	15,336	19,568	18,503	16,965		17,088
July	13,731	13,386	17,718	14,788	12,605		14,446
August	12,778	12,017	15,662	12,486	9,933		12,575
September	15,674	14,302	14,982	15,321	11,776		14,411
October	16,840	16,381	17,494	15,056	15,918		16,338
November	22,610	23,178	25,085	22,270	24,449		23,518
December	23,651	22,715	26,131	20,807	23,485		23,358

MILLION POUNDS

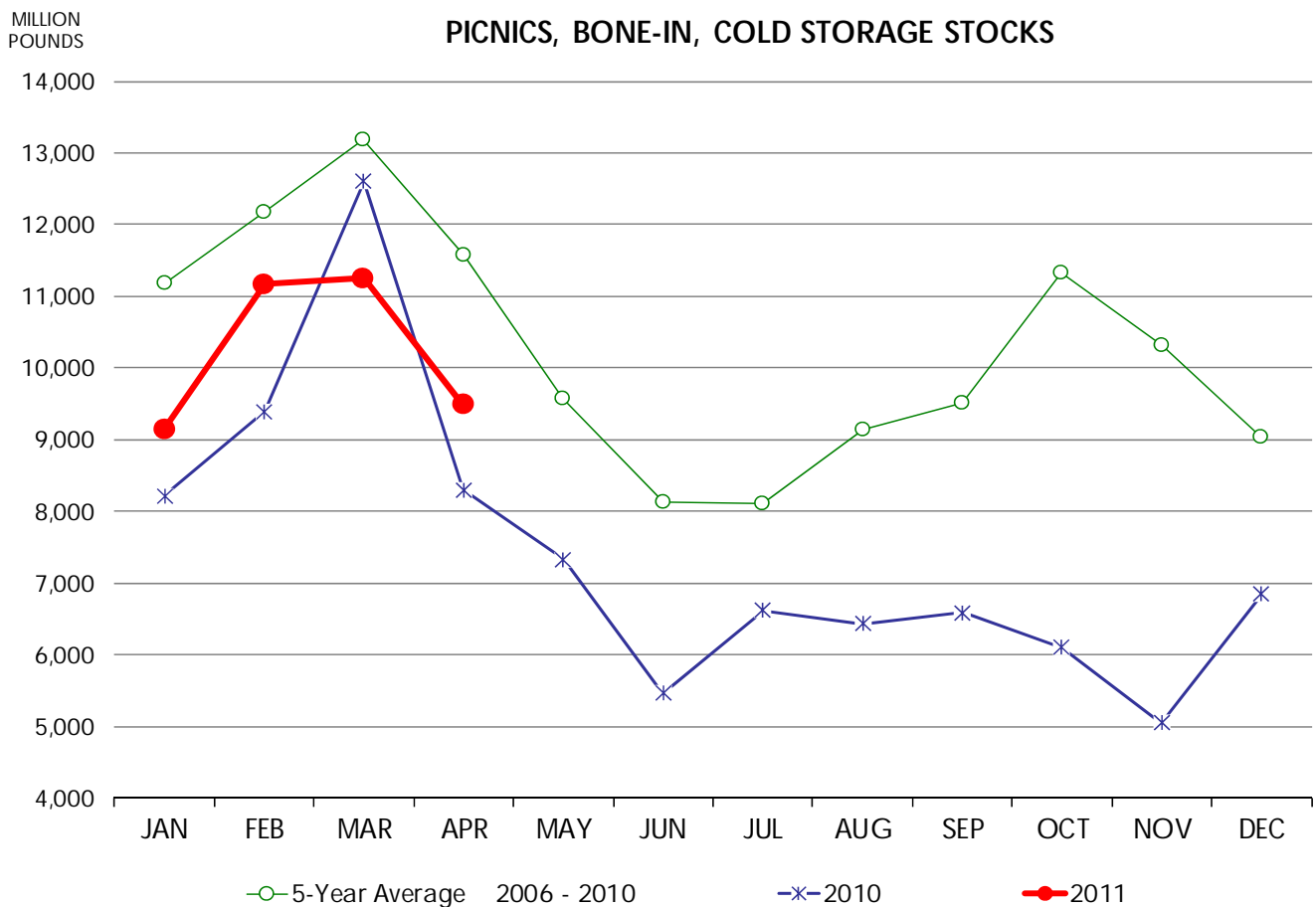
**PORK LOINS, BONELESS, COLD STORAGE STOCKS**



**PICNICS, BONE-IN, COLD STORAGE STOCKS**

THOUSAND POUNDS, END OF MONTH INVENTORIES

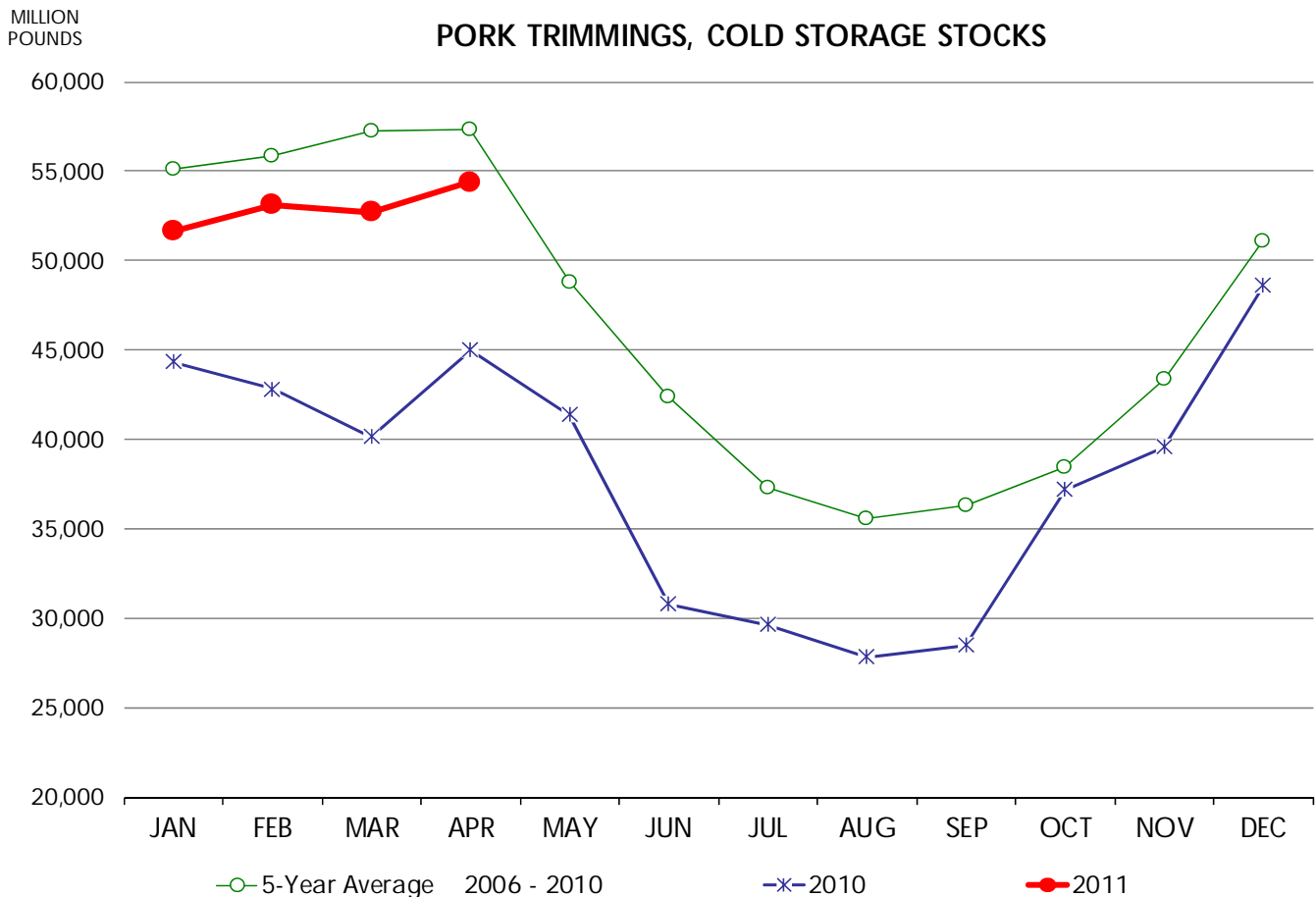
	2006	2007	2008	2009	2010	2011	5-Year Average 2006 - 2010
January	11,680	12,033	15,039	8,992	8,223	9,148	11,193
February	8,967	12,368	18,102	12,085	9,400	11,172	12,184
March	11,640	13,229	14,389	14,062	12,607	11,254	13,185
April	10,711	13,849	12,567	12,404	8,304	9,491	11,567
May	9,126	12,829	9,918	8,661	7,339		9,575
June	7,305	11,668	7,509	8,762	5,470		8,143
July	8,276	8,565	6,901	10,191	6,623		8,111
August	9,381	10,079	10,845	8,984	6,434		9,145
September	12,640	10,700	9,809	7,847	6,592		9,518
October	11,831	12,296	14,374	12,038	6,108		11,329
November	11,978	12,063	11,149	11,392	5,053		10,327
December	8,860	11,709	8,924	8,889	6,845		9,045



**PORK TRIMMINGS, COLD STORAGE STOCKS**

THOUSAND POUNDS, END OF MONTH INVENTORIES

	2006	2007	2008	2009	2010	2011	5-Year Average 2006 - 2010
January	53,625	47,908	63,268	66,610	44,338	51,650	55,150
February	56,201	46,956	70,604	62,705	42,813	53,145	55,856
March	53,111	54,487	75,864	62,481	40,142	52,721	57,217
April	50,095	61,245	60,949	69,556	44,985	54,407	57,366
May	39,307	48,927	52,034	62,220	41,375		48,773
June	31,057	39,847	50,286	59,827	30,812		42,366
July	33,575	35,540	41,164	46,723	29,663		37,333
August	34,073	39,505	36,682	39,816	27,847		35,585
September	37,738	39,653	36,165	39,701	28,491		36,350
October	35,392	40,296	40,682	38,576	37,190		38,427
November	40,409	46,163	51,082	39,599	39,591		43,369
December	43,859	54,013	64,997	43,815	48,626		51,062



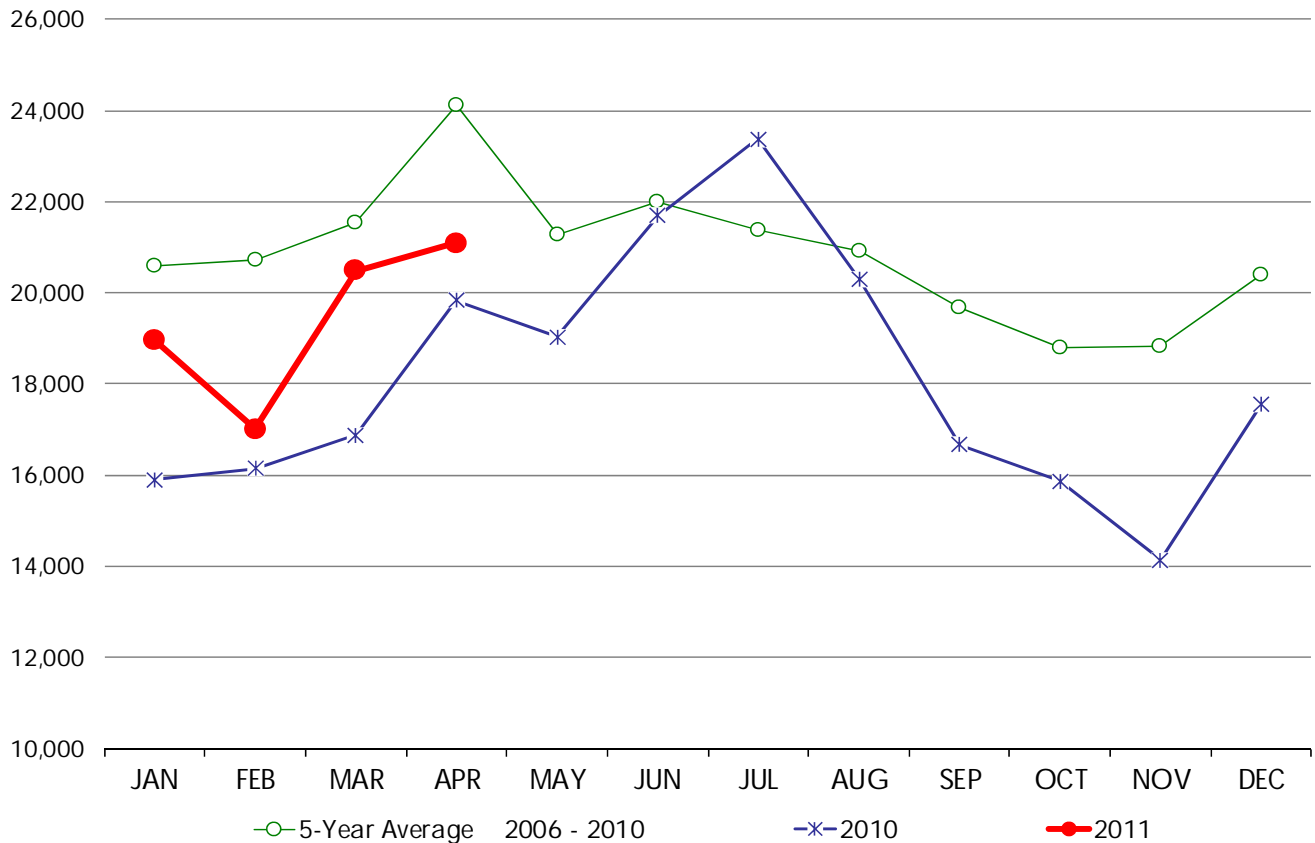
**WHOLE BROILERS, COLD STORAGE STOCKS**

THOUSAND POUNDS, END OF MONTH INVENTORIES

	2006	2007	2008	2009	2010	2011	5-Year Average 2006 - 2010
January	24,416	22,534	20,719	19,468	15,901	18,950	20,608
February	22,187	23,576	20,240	21,435	16,149	17,004	20,717
March	23,600	23,987	22,540	20,696	16,880	20,489	21,541
April	27,974	24,227	26,848	21,739	19,842	21,094	24,126
May	25,205	20,635	21,576	19,896	19,040		21,270
June	22,942	23,999	22,250	19,075	21,700		21,993
July	20,092	18,310	25,405	19,704	23,374		21,377
August	18,056	17,747	29,452	19,120	20,303		20,936
September	16,425	20,158	25,678	19,431	16,661		19,671
October	15,972	18,576	23,910	19,587	15,877		18,784
November	19,341	17,316	24,584	18,761	14,146		18,830
December	21,976	18,843	27,213	16,401	17,563		20,399

MILLION POUNDS

**WHOLE BROILERS, COLD STORAGE STOCKS**



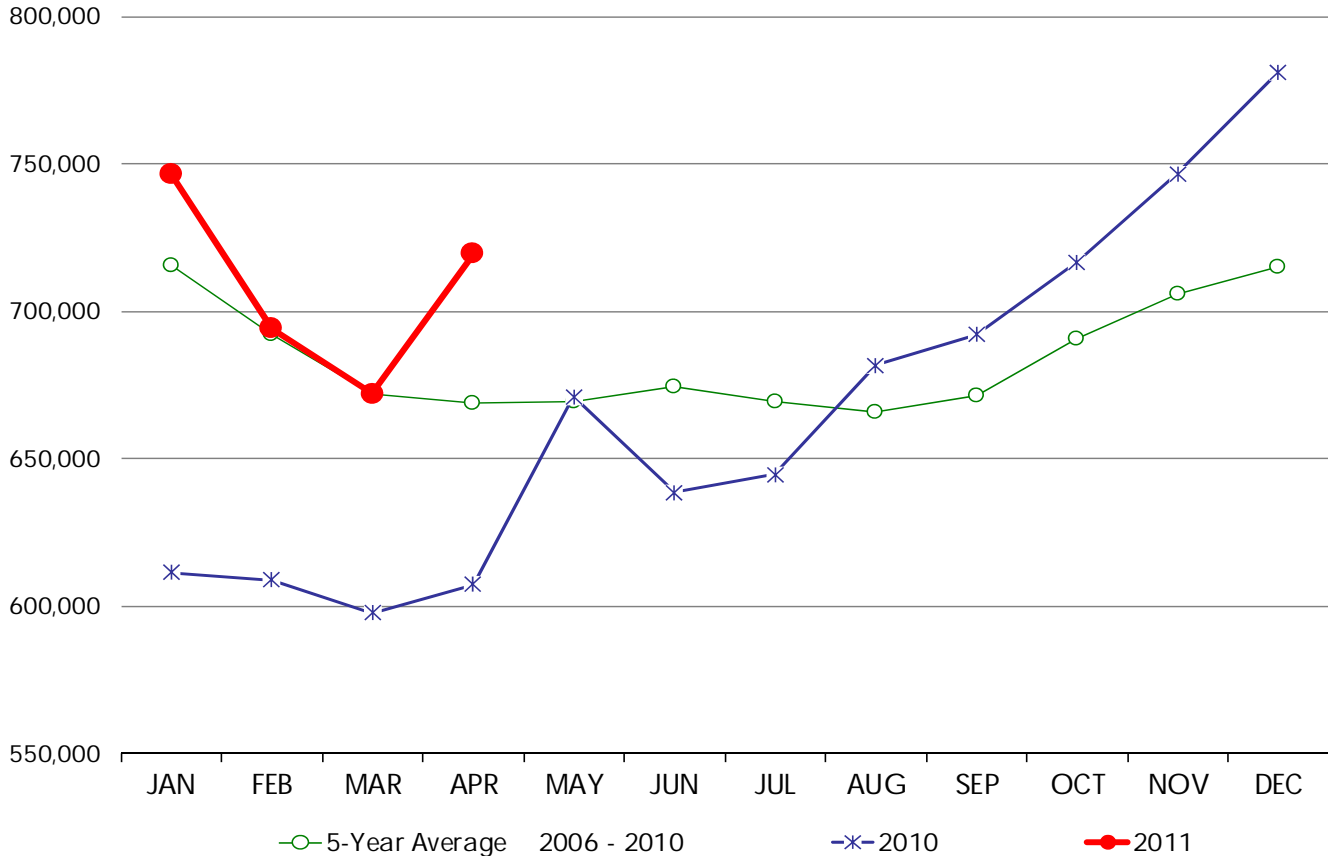
**CHICKEN PARTS, COLD STORAGE STOCKS**

THOUSAND POUNDS, END OF MONTH INVENTORIES

	2006	2007	2008	2009	2010	2011	5-Year Average 2006 - 2010
January	894,266	650,430	750,715	670,881	611,527	746,640	715,564
February	899,789	592,190	738,622	621,192	608,803	694,149	692,119
March	840,644	569,038	740,451	610,901	597,673	671,994	671,741
April	806,047	575,802	723,399	632,287	607,380	719,425	668,983
May	742,073	584,644	730,600	617,698	671,095		669,222
June	750,450	612,445	741,721	629,832	638,595		674,609
July	697,253	639,974	708,033	656,659	644,532		669,290
August	679,663	626,756	719,462	622,197	681,608		665,937
September	682,647	646,536	726,680	609,951	692,066		671,576
October	697,284	669,990	758,334	612,096	716,657		690,872
November	666,165	697,146	781,780	637,745	746,511		705,869
December	723,101	720,055	735,037	614,674	781,078		714,789

MILLION  
POUNDS

**CHICKEN PARTS, COLD STORAGE STOCKS**



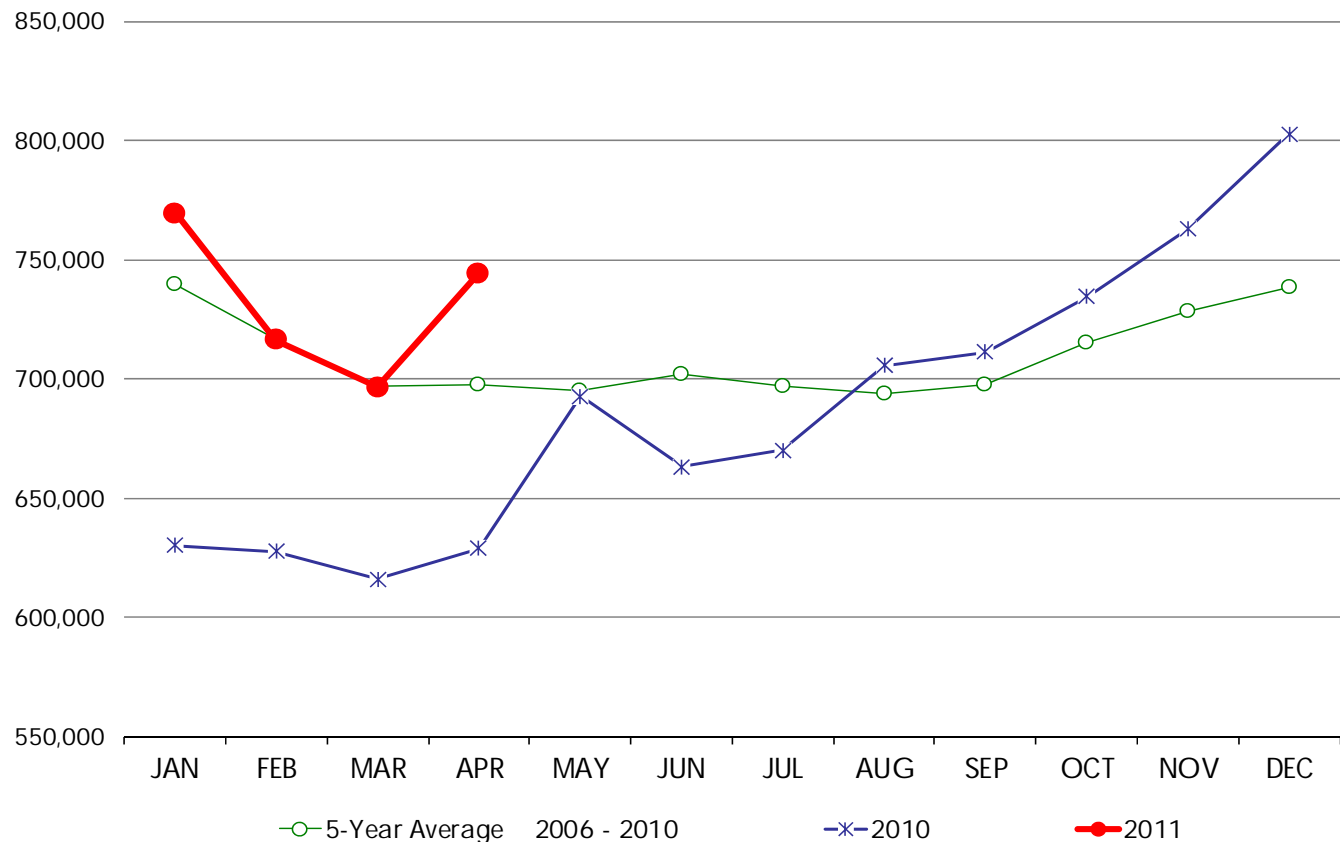
**ALL CHICKEN, COLD STORAGE STOCKS**

THOUSAND POUNDS, END OF MONTH INVENTORIES

	2006	2007	2008	2009	2010	2011	5-Year Average 2006 - 2010
January	921,071	678,467	773,005	694,433	630,249	769,538	739,445
February	923,718	621,956	760,831	647,759	627,816	716,405	716,416
March	869,367	599,274	764,765	635,475	616,158	696,464	697,008
April	840,995	606,083	752,875	658,243	628,907	744,335	697,421
May	773,639	612,267	755,134	641,936	692,744		695,144
June	781,272	643,985	768,776	653,886	663,288		702,241
July	727,855	665,583	738,872	681,409	670,084		696,761
August	710,420	652,403	755,405	646,484	705,736		694,090
September	710,281	673,576	759,321	634,357	711,197		697,746
October	723,519	694,020	787,930	635,993	734,540		715,200
November	692,276	717,855	811,100	659,326	762,790		728,669
December	750,371	741,145	765,442	633,290	802,794		738,608

MILLION  
POUNDS

**ALL CHICKEN, COLD STORAGE STOCKS**



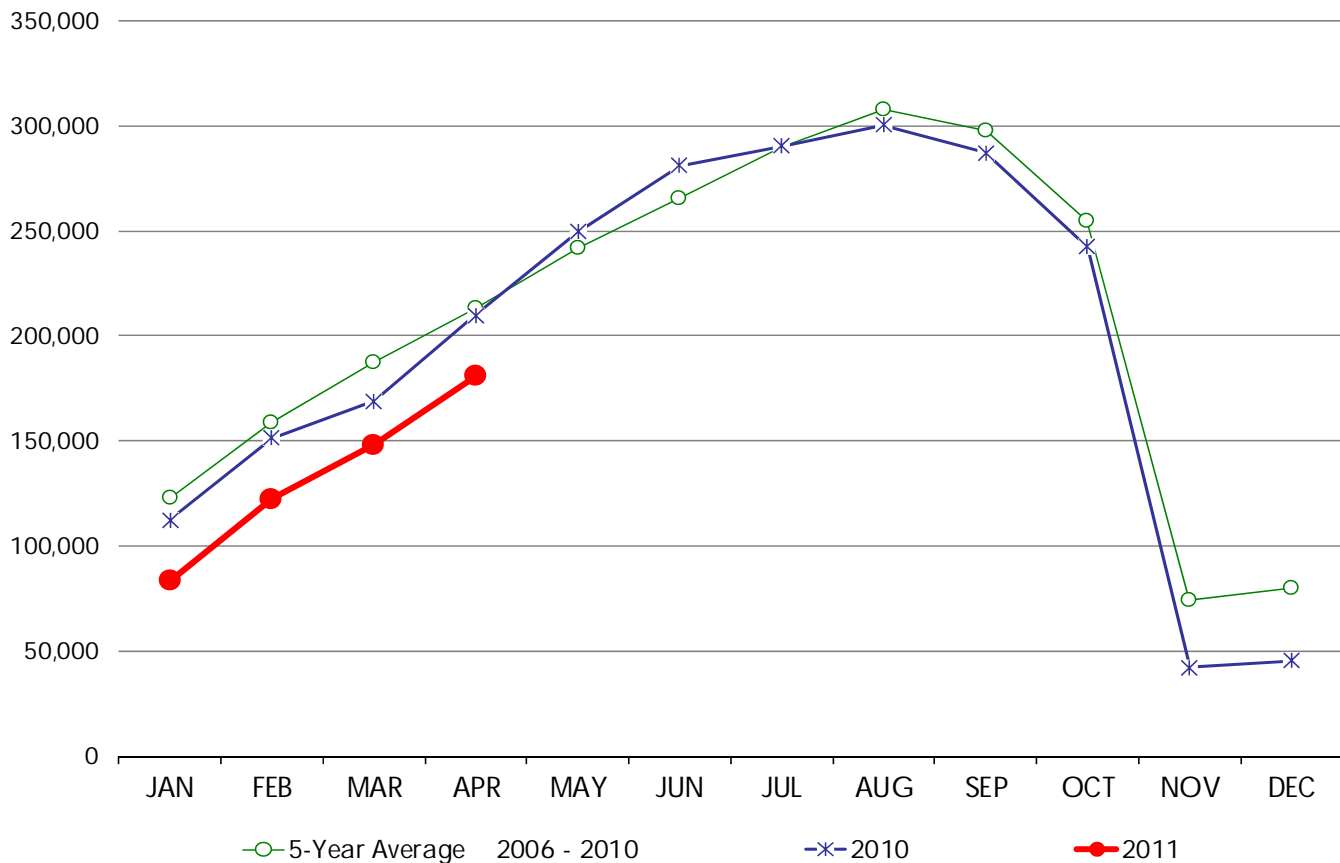
**WHOLE TURKEYS, COLD STORAGE STOCKS**

THOUSAND POUNDS, END OF MONTH INVENTORIES

	2006	2007	2008	2009	2010	2011	5-Year Average 2006 - 2010
January	86,610	122,839	97,913	193,642	112,328	83,569	122,666
February	124,769	145,878	155,274	216,467	151,530	122,394	158,784
March	163,752	170,851	180,178	253,019	168,926	148,261	187,345
April	181,854	176,100	212,828	283,747	209,652	180,690	212,836
May	217,814	211,377	232,735	298,349	249,487		241,952
June	235,351	240,990	257,884	312,990	280,861		265,615
July	247,072	269,465	290,153	350,427	290,376		289,499
August	244,209	298,144	319,091	376,928	300,416		307,758
September	233,639	272,665	334,449	361,206	286,890		297,770
October	199,980	220,786	310,749	298,372	242,209		254,419
November	64,373	56,799	131,406	76,195	42,347		74,224
December	63,973	75,626	139,352	76,379	45,408		80,148

MILLION POUNDS

**WHOLE TURKEYS, COLD STORAGE STOCKS**



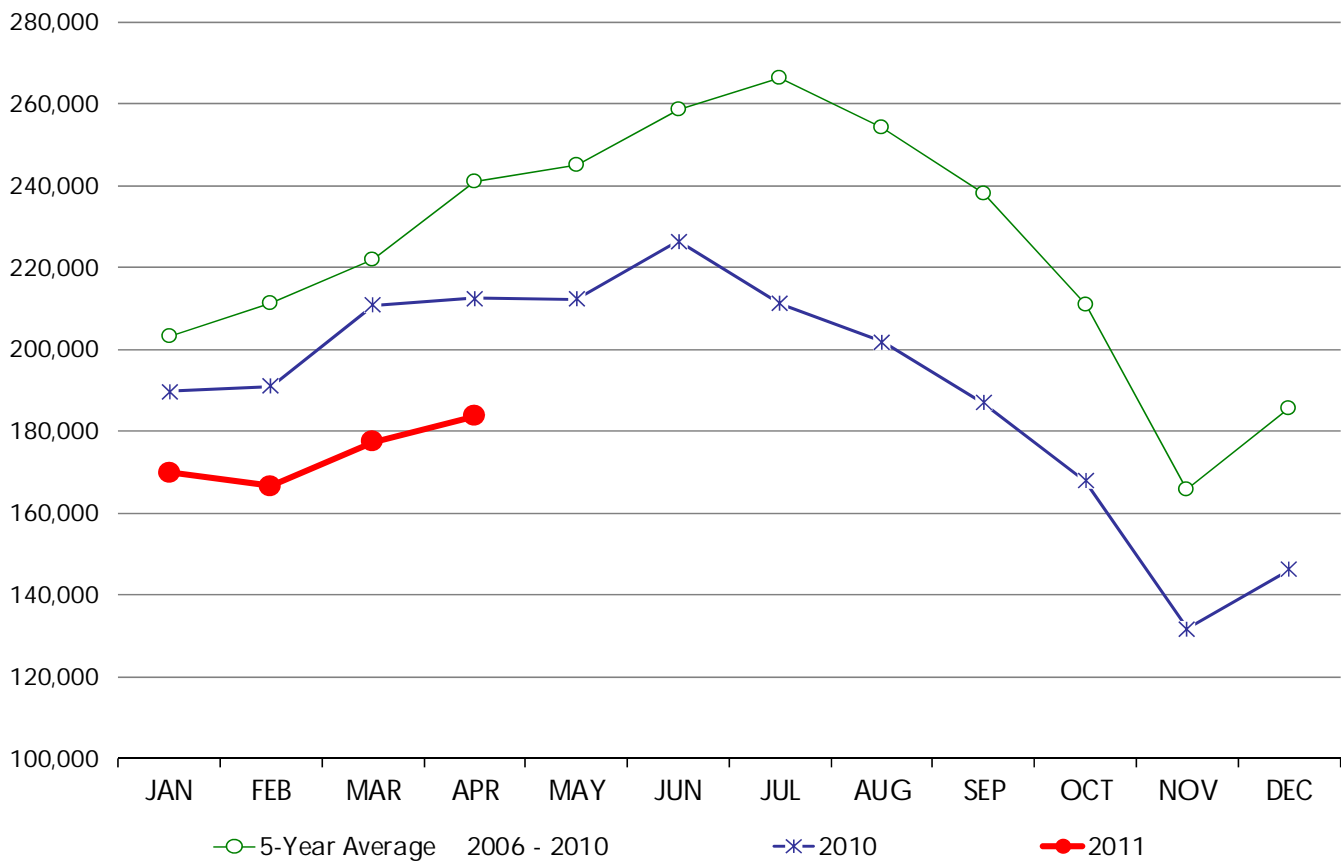
**OTHER TURKEYS, COLD STORAGE STOCKS**

THOUSAND POUNDS, END OF MONTH INVENTORIES

	2006	2007	2008	2009	2010	2011	5-Year Average 2006 - 2010
January	173,859	170,540	229,677	252,555	189,730	169,958	203,272
February	190,910	167,000	261,420	245,928	190,888	166,582	211,229
March	213,995	175,852	247,955	260,365	210,794	177,427	221,792
April	241,878	184,120	278,455	287,961	212,412	183,714	240,965
May	248,668	186,607	289,686	287,396	212,318		244,935
June	272,115	207,420	304,809	281,752	226,313		258,482
July	265,151	234,082	330,539	290,633	211,135		266,308
August	256,049	226,242	310,145	276,618	201,759		254,163
September	230,580	232,248	287,026	252,685	186,855		237,879
October	204,191	196,185	267,235	219,091	167,952		210,931
November	150,153	150,063	228,973	168,285	131,763		165,847
December	154,383	184,968	256,792	185,459	146,152		185,551

MILLION POUNDS

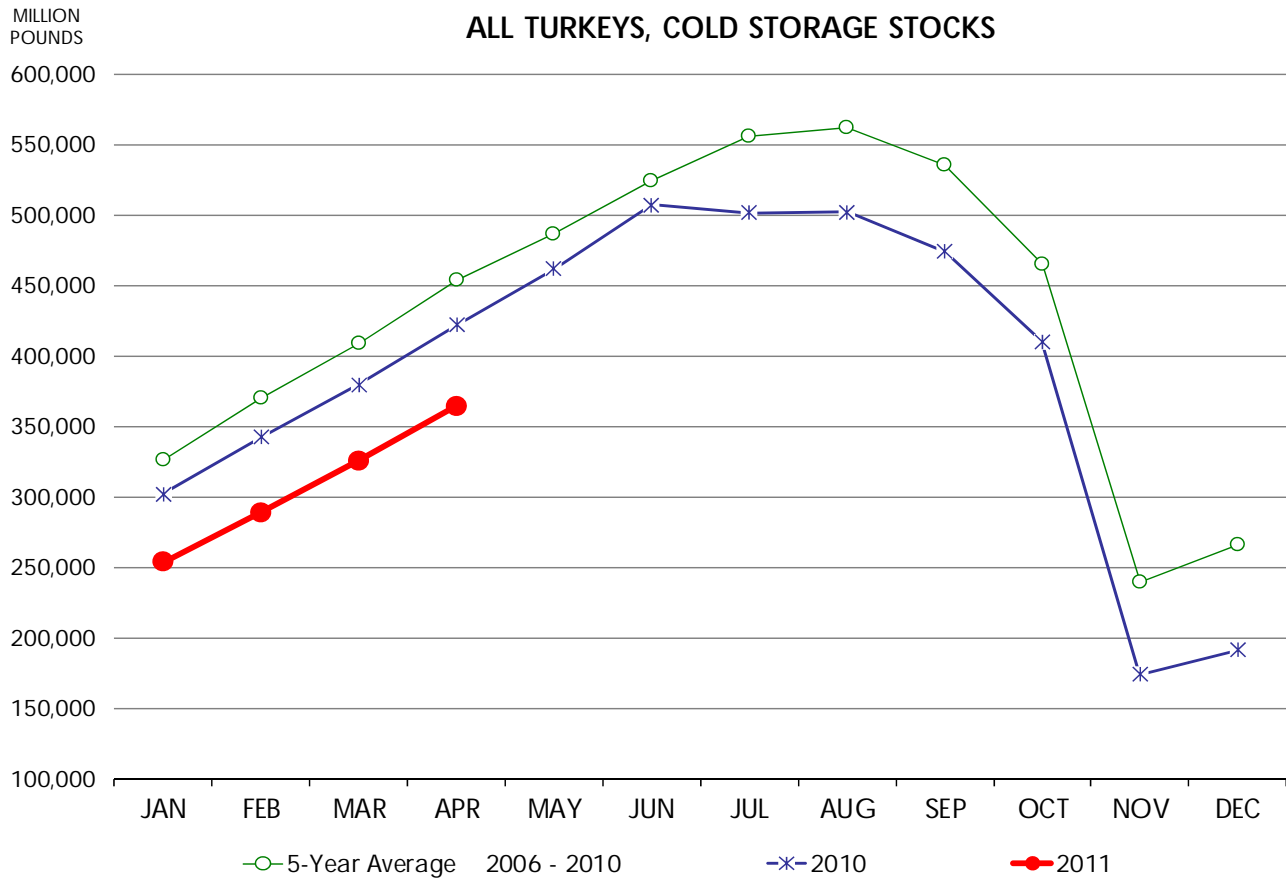
**OTHER TURKEYS, COLD STORAGE STOCKS**



**ALL TURKEYS, COLD STORAGE STOCKS**

THOUSAND POUNDS, END OF MONTH INVENTORIES

	2006	2007	2008	2009	2010	2011	5-Year Average 2006 - 2010
January	260,469	293,379	327,590	446,197	302,058	253,527	325,939
February	315,679	312,878	416,694	462,395	342,418	288,976	370,013
March	377,747	346,703	428,133	513,384	379,720	325,688	409,137
April	423,732	360,220	491,283	571,708	422,064	364,404	453,801
May	466,482	397,984	522,421	585,745	461,805		486,887
June	507,466	448,410	562,693	594,742	507,174		524,097
July	512,223	503,547	620,692	641,060	501,511		555,807
August	500,258	524,386	629,236	653,546	502,175		561,920
September	464,219	504,913	621,475	613,891	473,745		535,649
October	404,171	416,971	577,984	517,463	410,161		465,350
November	214,526	206,862	360,379	244,480	174,110		240,071
December	218,356	260,594	396,144	261,838	191,560		265,698



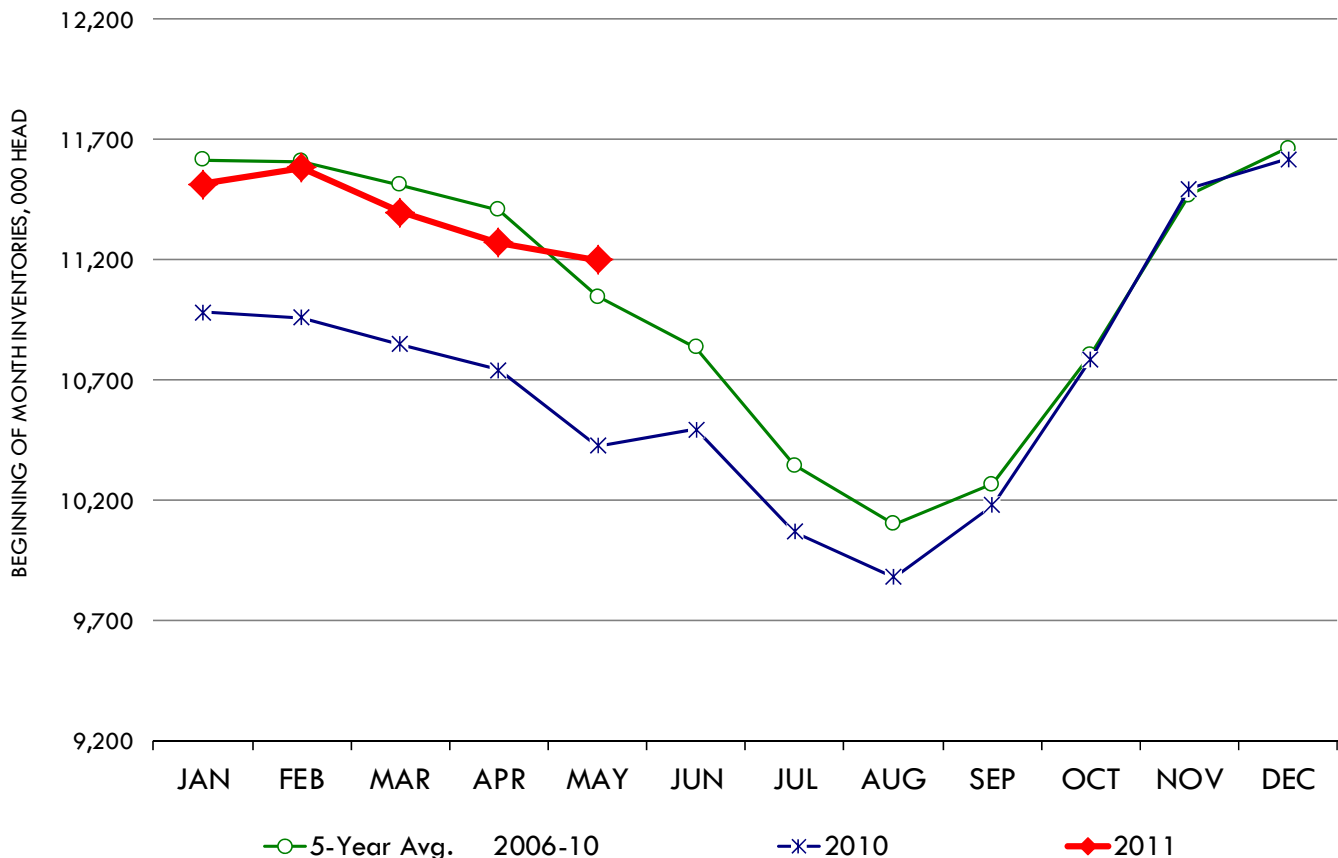


## MONTHLY FED CATTLE INVENTORIES, US ALL CATTLE 1000+ CAPACITY

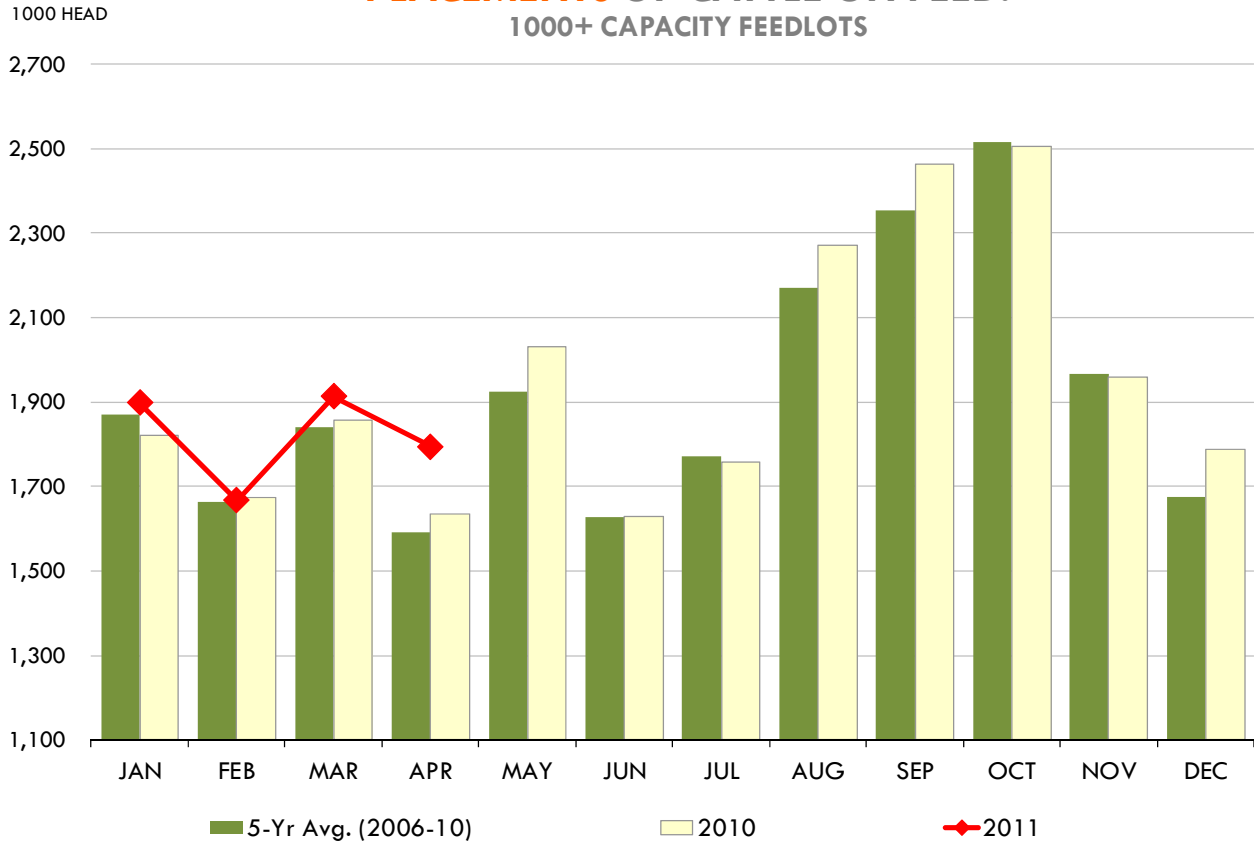
THOUSAND HEAD, BEGINNING OF MONTH INVENTORIES

	2006	2007	2008	2009	2010	2011	5-Year Avg. 2006-10
<b>January</b>	11,804	11,974	12,092	11,234	10,983	11,514	11,617
<b>February</b>	12,110	11,726	11,966	11,288	10,959	11,583	11,610
<b>March</b>	12,023	11,599	11,853	11,228	10,849	11,399	11,510
<b>April</b>	11,812	11,644	11,684	11,162	10,742	11,271	11,409
<b>May</b>	11,559	11,297	11,135	10,822	10,428	11,200	11,048
<b>June</b>	11,187	11,272	10,815	10,407	10,495		10,835
<b>July</b>	10,872	10,737	10,295	9,752	10,071		10,345
<b>August</b>	10,822	10,299	9,869	9,637	9,880		10,101
<b>September</b>	10,986	10,302	9,997	9,879	10,181		10,269
<b>October</b>	11,385	10,967	10,415	10,474	10,788		10,806
<b>November</b>	11,969	11,769	10,972	11,134	11,497		11,468
<b>December</b>	11,973	12,099	11,346	11,277	11,620		11,663

### MONTHLY FED CATTLE INVENTORIES, US ALL CATTLE 1000+ CAPACITY



### PLACEMENTS OF CATTLE ON FEED: 1000+ CAPACITY FEEDLOTS



### CATTLE MARKETINGS 1000+ CAPACITY FEEDLOTS

